

INSTALLATION INSTRUCTIONS

1895R NISSAN X-TRAIL 10/01-on

PLEASE READ INSTRUCTIONS THROUGH BEFORE YOU BEGIN

WARNING : 1. Do not drill, cut weld or otherwise modify the towbar.
 2. If you are using electric welding on a motor vehicle, always check that the vehicle is not equipped with electronic engine or instrument management equipment. Failure to do so could destroy any onboard computers. If in doubt, check with the vehicle's manufacturer.

Max. Towing Weight: 2000kg

1. Ensure all hardware items have been included.
2. Remove plastic under tray.
3. To remove bumper bar.
- A. Remove 6 screws, 1 behind plastic wheel arch cover, 1 in bottom of bumper and 1 in wheel arch (3 per side).
- B. Remove 3 plastic button's under bumper.
- C. Remove 2 x M10 bolts behind tailgate.
- D. Remove bumper bar.
4. Remove impact cone.
5. Drop exhaust from top hanger.
6. Slide charcoal canister out of holder.
7. Fit towbar up to vehicle aligning holes in side plates with holes in chassis using M12 bolts, plate & wire up chassis as per diagram.
8. Fit M12 bolt, loose plate, spring washer and nut as per diagram.
9. Tighten all bolts to torque listing.
10. Refit charcoal canister and exhaust to hanger.
11. Cut plastic under tray as per diagram.
12. Refit bumper bar.
13. Refit plastic under tray.
14. Towbar rating sticker to be conspicuously located on inside rear end of the drivers door. (See diagram below)

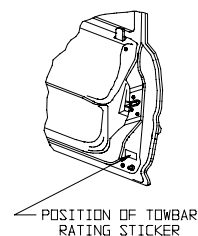
NOTE: Hayman Reese recommends that you check your towball to ensure it complies to Australian Design Rules.

RECOMMENDED ASSEMBLY TORQUE LISTING

<u>Diameter</u>	<u>Grade 8.8 Bolt</u>
	Nm
M6	9.5
M8	21.7
M10	43.4
M12	77.3
M14	121.0
M16	189.8

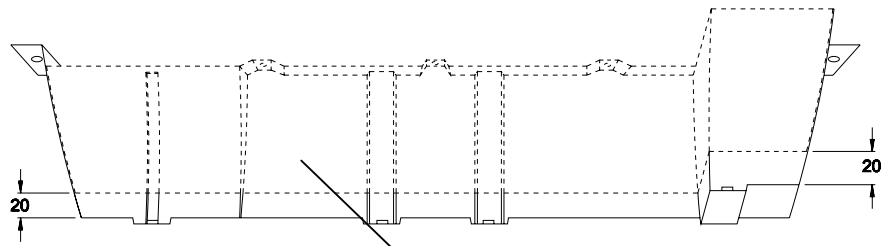
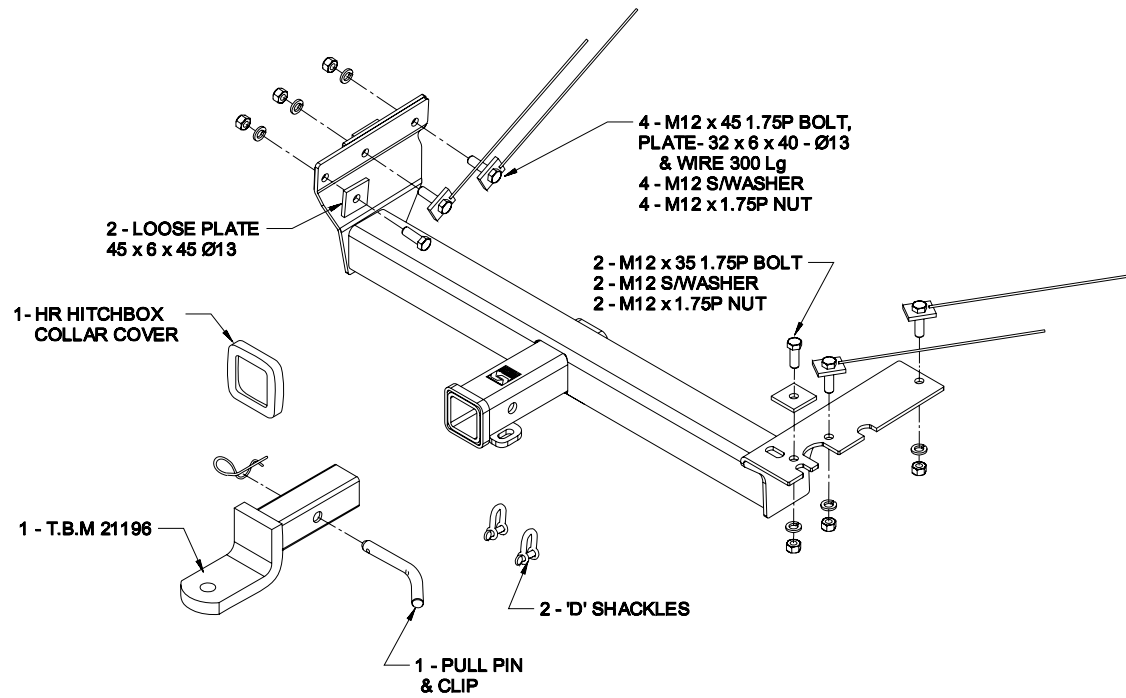
FOR TOWING PURPOSES ONLY

For towing capacity details please refer to vehicle owner's manual or to the manufacturer. Overloading can void your warranties.



PLEASE NOTE: You must remove the lug unless you are actually towing if it obscures your number plate. Failure to do so may result in a fine.

1895R NISSAN X-TRAIL 10/01-on



Area to be removed from front face of plastic under tray

Area to be removed from rear face of plastic under tray

