

INSTALLATION INSTRUCTIONS



02465RW- T31 NISSAN X TRAIL 10-2007 -ON

ENSURE INSTRUCTIONS ARE UNDERSTOOD BEFORE INSTALLATION.

CAUTION THIS PRODUCT IS NOT RECOMMENDED FOR LOAD LEVELLING OR WEIGHT DISTRIBUTION DEVICES.

Rating Braked 2000 Kg
Rating Unbraked 750 Kg
Max Static Ball Load 200 Kg

Warning:

1. Do not, drill, cut, weld or otherwise modify the towbar.
2. If you are using electric welding on a motor vehicle, **always** check that the vehicle is not equipped with electronic engine or instrument management equipment. Failure to do so could **destroy** any onboard computers. If in doubt, check with the vehicle's manufacturer.
1. **General:** Ensure all hardware items have been included
2. It is recommended that the instructions are read through and completely understood before making any attempt to fit this product.
3. Be wary of any changes to vehicle designs or other accessories that may conflict with the installation of this product.
4. Before drilling ensure that the area is clear of fuel, electrical & other components.
5. All holes drilled into the body panels shall have all burrs & swarf removed then coated with a suitable rust preventative paint.
6. The high tensile fasteners supplied with this product were used to achieve the specified rating. If replacement is required ensure that fasteners of the same rating & quality are used. Contact an authorised **Hayman Reese** dealer if further information is required.
7. Ensure that all hardware is fastened to torque list below check fasteners on regular basis.
8. Towbar load rating sticker provided with this product shall be conspicuously located on inside rear end of the driver's door. **(See diagram below).**
9. Hayman Reese recommends that you check your tow ball to ensure that it complies with the Australian standards **AS 4177.2**.
10. **PLEASE NOTE:** It is advised to remove your lug or tbm when not actually towing so as to produce a clear view of the vehicles registration plate if obscured, and to also provide maximum available departure angle.

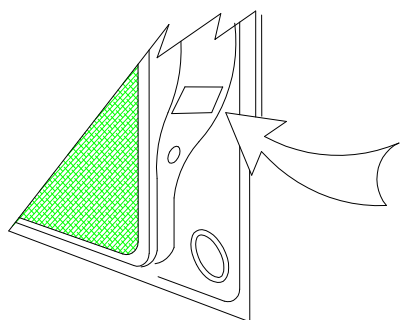
Tow bar Maintenance and Care.

Hayman Reese recommends that bolt torque's, as listed below, are routinely and regularly inspected and checked for correct tension. Replace any worn or defective parts.

We recommended to remove Tow Ball Mounts (TBM's, tongues or lugs) when not being used for any considerable length of time.

So as to avoid injury, when not towing it is suggested that the tongue, Pull Pin and R-clip are removed then stored in a safe, clean and dry place, away from excessive moisture.

Hitch Pull Pins and spring "R" clips are regularly checked for proper installation. Replace any worn or defective parts.



Place load rating sticker
inside driver's door here

RECOMMENDED ASSEMBLY TORQUE LISTING

<u>Diameter</u>	<u>Grade 8.8 Bolt</u>
M6	9.5 Nm
M8	21.7 Nm
M10	43.4 Nm
M12	77.3 Nm
M16	189.8 Nm

FOR TOWING PURPOSES ONLY

For towing capacity details please refer to vehicle owner's manual or to the manufacturer. Overloading can void your warranties.

INSTALLATION INSTRUCTIONS



02465RW- T31 NISSAN X TRAIL 10-2007 -ON

ENSURE INSTRUCTIONS ARE UNDERSTOOD BEFORE INSTALLATION.

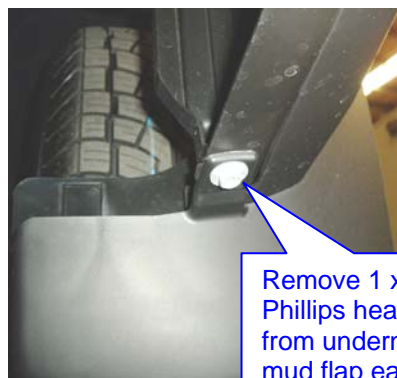
11. Remove rear mud flaps via

- Remove 3 x torx screws from inside each wheel arch see fig 1.
- Remove 1 x Phillips head screw from under side of mud flap see fig 2.



Remove 3 x torx screws inside each wheel arch .

Fig 1



Remove 1 x Phillips head screw from underneath mud flap each side.

Fig 2

12. Remove rear plastic guard trim via

- Peel plastic wheel arch trim away to the centre of the wheel arch to expose 1 x Phillips head screw retaining bumper bar skin to the rear quarter panel see fig 3.
- Caution** must be taken when prying away the wheel arch trim from bumper bar skin damage to wheel arch trim & bumper bar skin can occur if caution is not taken.
- Remove 1 x Phillips head screw each side of the vehicle see fig 4.



Peel away trims from wheel arch each side.

Fig 3

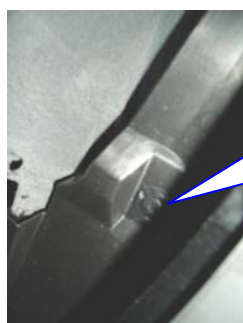


Phillips head screw at the top of each wheel arch & quarter panel

Fig 4

13. Remove plastic guards via

- Remove plastic trim via removing 2 plastic trim plugs each side of inner wheel arch see fig 5.
- Remove side bumper retainer via 1 plastic trim plug each side of vehicle see fig 6.



Remove 2 x plastic trim plugs then remove plastic trim.

Fig 5

Remove plastic trim plug from bumper retainer each side of the vehicle.

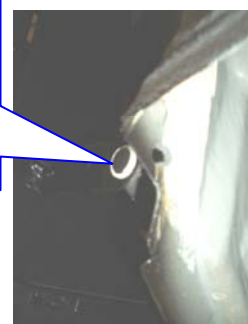


Fig 6

14. Remove plastic trim plugs underside bumper.

INSTALLATION INSTRUCTIONS



02465RW- T31 NISSAN X TRAIL 10-2007 -ON

ENSURE INSTRUCTIONS ARE UNDERSTOOD BEFORE INSTALLATION.

- a. Remove plastic trim plugs from the underside of the bumper bar skin see fig 7.
- b. From underneath the vehicle flex out bumper bar skin then disconnect the reverse lamp wiring harness each side of the vehicle note two people are required to disconnect see fig 8.
- c. Remove 2 x plastic covers from inside the rear tailgate cavity to expose 2 x screws then remove screws see fig 9.
- d. Carefully flex out bumper bar skin at the sides then pull rearward some force may be required two person lift is required.
- e. Wheel arch trims are to be held out so not to scratch bumper bar skin while removing see fig 3.

Fig 7



Remove plastic trim plugs from underneath bumper bar skin.

Fig 8



Disconnect the reversing lamps each side of the vehicle.

Fig 9



Remove plastic covers then remove 2 x screws in the rear tailgate cavity as shown.

15. Remove rear impact beam via

- a. Remove rear impact beam via 4 nuts inside the rear cross bar see fig 10.
- b. Remove 4 x retaining screws holding on face plate each side of the vehicle see fig 11.
- c. Disconnect the wiring harness on the passenger side of the vehicle see fig 11.
- d. Then remove and discard the impact beam & bolts.
- e. Lower the rear most muffler from the 2 rear most rubber hangers to aid fitment of the towbar See fig 12.

Remove 2 x nuts each side of vehicle.



Fig 10

Remove 4 x nuts then remove face plate & discard repeat process for driver's side of vehicle.

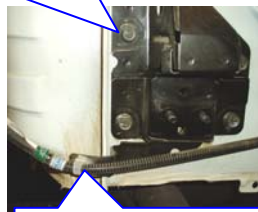


Fig 11

Disengage wiring from stay

Rear most rubber hanger on the inside of chassis rail



Fig 12

16. Fitment of towbar to the vehicle via

- a. Offer tow bar to the rear sub frame of the vehicle so that captive nuts in the towbar arms align with existing holes in the chassis rails.
- b. Fit M12 bolts loose plates & spring washers provided loosely see fig 14.
- c. Fit M8 bolts loose plates & spring washers provided to rear face mounts see fig 13.
- d. Fasten all hardware to torque listing.
- e. Refit the rear muffler in the reverse of step 15 e.
- f. Cut section of bumper bar rear skin out as per fig 15 with suitable hacksaw or similar device.

17. Refit the rear bumper bar skin via

INSTALLATION INSTRUCTIONS



02465RW- T31 NISSAN X TRAIL 10-2007 -ON

ENSURE INSTRUCTIONS ARE UNDERSTOOD BEFORE INSTALLATION.

- a. Refit the rear bumper bar skin in the reverse of steps 14e through to 11a ensure that 2 people are available for bumper fitment so not to damage the bumper as the wheel arch trims will need to be held out so that the bumper can fit into the correct position

Fit M8 bolts with loose plates & spring washers in 4 places loosely passenger side shown repeat for drivers side



Fig 13

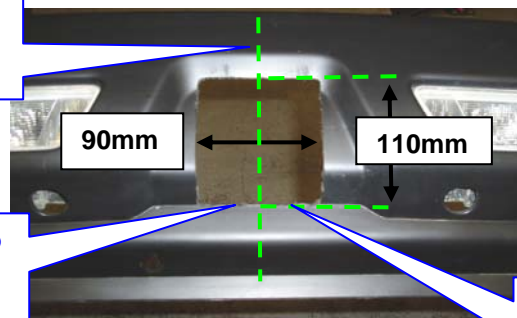
Fit M12 bolts with loose plates & spring washers in 4 places loosely drivers side shown repeat for passenger side.



Fig 14

Establish centre line of bumper bar skin then measure from centre out.

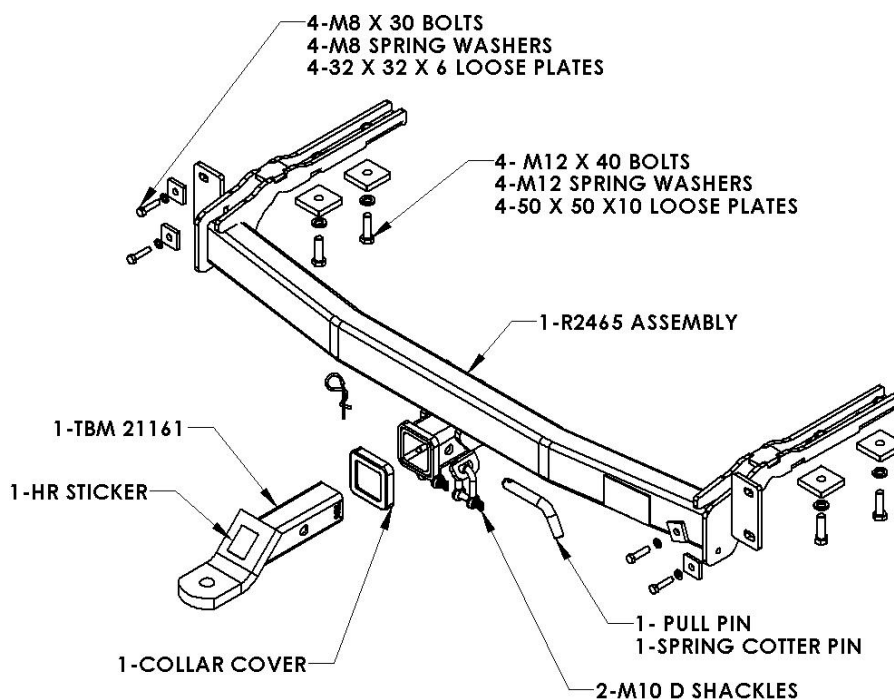
Fig 15



Measure up from the top inside edge of bumper bar recess as shown.

Place masking tape over the bumper bar skin before marking then cut with suitable saw or similar device.

Areas of bumper bar to be removed ensure that cut out is free of burrs & swarf.



HAYMAN REESE
PART No: 100060-WL
NISSAN T31 X-TRAIL
OCT' 2007 - ONWARDS

INSTALLATION INSTRUCTIONS

PLEASE ENSURE THAT INSTRUCTIONS ARE UNDERSTOOD PRIOR TO FITMENT

Wiring Loom Installation Instructions

NISSAN T31 X-TRAIL
OCT' 2007 - ONWARDS
Part No: 100060-WL

Tail Harness Length Required: 1800mm
RPA Override Switch Part No: 04848 (If Fitted)

Wiring Loom Installation Time: Approx 45 Mins

Issue Date 06-04-11

Page 1

Part No: 100060-WL

Hayman Reese (Cequent)
PO Box 4050, Dandenong South VIC 3164
Phone 1800 812 017 Email info@haymanreese.com.au

www.haymanreese.com.au



HAYMAN REESE
PART No: 100060-WL
NISSAN T31 X-TRAIL
OCT' 2007 - ONWARDS

INSTALLATION INSTRUCTIONS

PLEASE ENSURE THAT INSTRUCTIONS ARE UNDERSTOOD PRIOR TO FITMENT

1. In the luggage compartment, remove the floor cover (1).



2. Remove the lower storage trays (1).



3. Remove the rear trim (1) by first removing the small plastic cap (2) on the striker.



Issue Date 06-04-11

Page 2

Part No: 100060-WL

Hayman Reese (Cequent)
PO Box 4050, Dandenong South VIC 3164
Phone 1800 812 017 Email info@haymanreese.com.au

www.haymanreese.com.au



HAYMAN REESE
PART No: 100060-WL
NISSAN T31 X-TRAIL
OCT' 2007 - ONWARDS

INSTALLATION INSTRUCTIONS

PLEASE ENSURE THAT INSTRUCTIONS ARE UNDERSTOOD PRIOR TO FITMENT

4. On the LHS luggage compartment trim, remove the two cargo hooks (1) by first removing the two bolts (2).
5. Remove the plastic cap from the upper LHS luggage compartment trim and release the bolt (3) underneath.
6. On the upper LHS luggage compartment trim, lift the fastener cover (4) and release the screw (5) from underneath.
7. Repeat the above steps for the RHS.



8. Remove the cross member trim (1).
9. On the back of the LHS rear seat backrest, remove the plastic cover (2) and remove any bolts (3) or nuts (4).
10. Remove the LHS rear seat backrest.



11. Remove the LHS rear door sill trim (1).



Issue Date 06-04-11

Page 3

Part No: 100060-WL

Hayman Reese (Cequent)
PO Box 4050, Dandenong South VIC 3164
Phone 1800 812 017 Email info@haymanreese.com.au

www.haymanreese.com.au



HAYMAN REESE
PART No: 100060-WL
NISSAN T31 X-TRAIL
OCT' 2007 - ONWARDS

INSTALLATION INSTRUCTIONS

PLEASE ENSURE THAT INSTRUCTIONS ARE UNDERSTOOD PRIOR TO FITMENT

12. Dislodge the LHS luggage compartment trim (1).
13. Repeat the above step for the RHS.
14. Disconnect the 12v accessory connector (2) and remove the LHS luggage compartment trim (1).



15. From the outside of the vehicle, remove the LHS grommet (1).
16. Drill out the grommet hole to Ø31mm.
17. File any rough or sharp edges and spray on rust inhibitor.



18. Locate and disconnect the LHS tail light connectors.
19. Patch the Trailer Harness mating connectors (1) in between the LHS tail light assembly and the LHS tail light connectors.



Issue Date 06-04-11

Page 4

Part No: 100060-WL

Hayman Reese (Cequent)
PO Box 4050, Dandenong South VIC 3164
Phone 1800 812 017 Email info@haymanreese.com.au

www.haymanreese.com.au

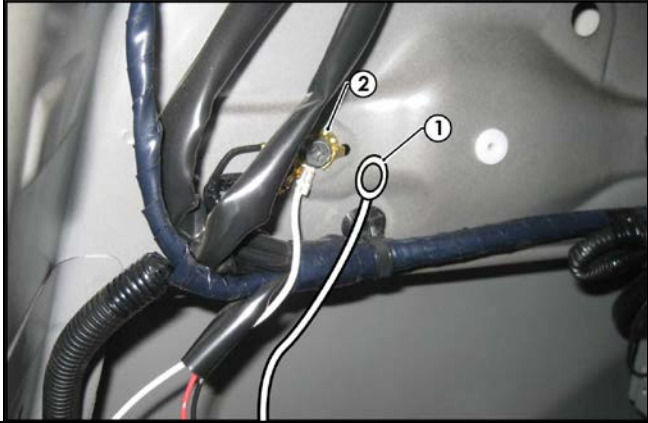


HAYMAN REESE
PART No: 100060-WL
NISSAN T31 X-TRAIL
OCT' 2007 - ONWARDS

INSTALLATION INSTRUCTIONS

PLEASE ENSURE THAT INSTRUCTIONS ARE UNDERSTOOD PRIOR TO FITMENT

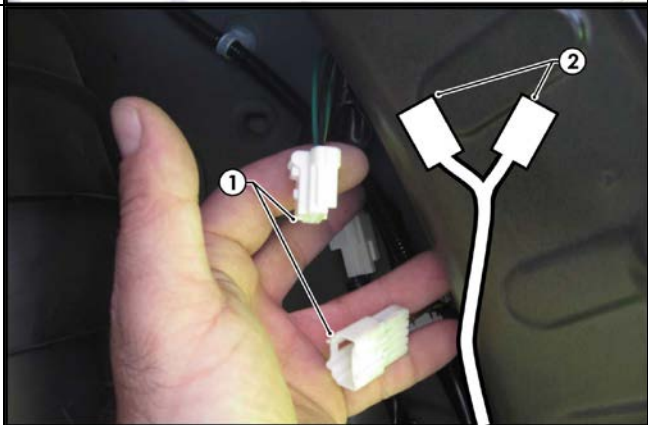
20. Connect the Trailer Harness ground ring terminal (1) to the vehicle ground point (2).



21. Route the Trailer Harness (1) (P/No: 100060-WL) along the rear of the luggage compartment and towards the RHS tail light connector.



22. Locate and disconnect the RHS tail light connectors (1).
23. Patch the Trailer Harness mating connectors (2) in between the RHS tail light connectors (1).



Issue Date 06-04-11

Page 5

Part No: 100060-WL

Hayman Reese (Cequent)
PO Box 4050, Dandenong South VIC 3164
Phone 1800 812 017 Email info@haymanreese.com.au

www.haymanreese.com.au



HAYMAN REESE
PART No: 100060-WL
NISSAN T31 X-TRAIL
OCT' 2007 - ONWARDS

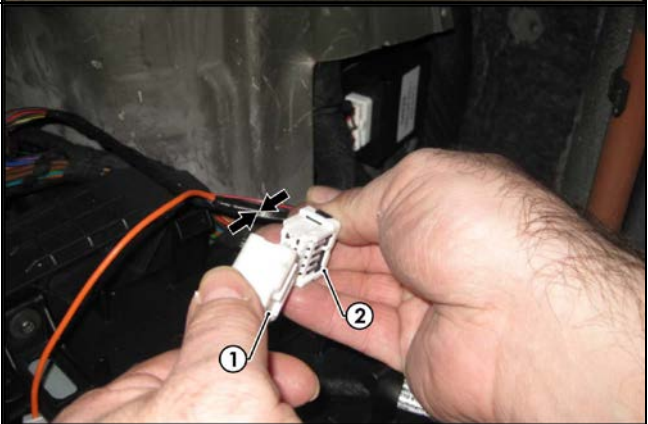
INSTALLATION INSTRUCTIONS

PLEASE ENSURE THAT INSTRUCTIONS ARE UNDERSTOOD PRIOR TO FITMENT

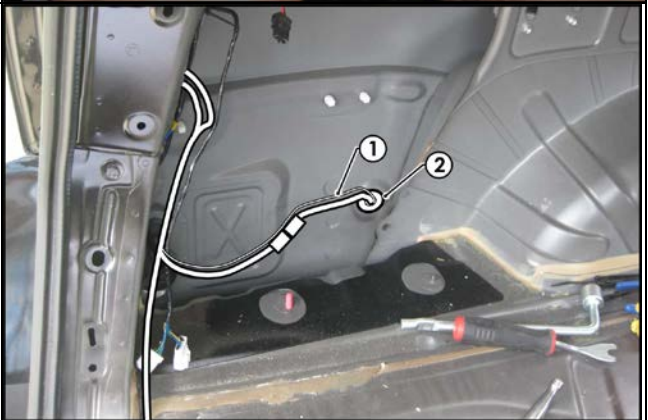
24. From the outside of the vehicle, mount the trailer socket (1) to the towbar mounting bracket using M4 fasteners (not supplied).
25. Route the Tail Harness (tail length 1800mm) (2) across the towbar towards the LHS of the vehicle and up through the previously drilled out hole.



26. Connect the Tail Harness 8-way connector (1) to the Trailer Harness mating 8-way connector (2).



27. Route the Trailer Harness 'BLACK' reverse wire (1) out through the trailer harness grommet (2) to the outside of the vehicle.
28. Ensure the Tail Harness grommet is seated correctly and secure it in place using a cable tie (not supplied).



Issue Date 06-04-11

Page 6

Part No: 100060-WL

Hayman Reese (Cequent)
PO Box 4050, Dandenong South VIC 3164
Phone 1800 812 017 Email info@haymanreese.com.au

www.haymanreese.com.au



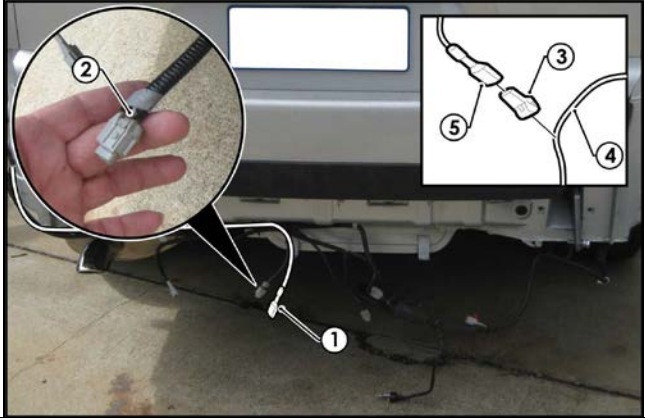
HAYMAN REESE
PART No: 100060-WL
NISSAN T31 X-TRAIL
OCT' 2007 - ONWARDS

INSTALLATION INSTRUCTIONS

PLEASE ENSURE THAT INSTRUCTIONS ARE UNDERSTOOD PRIOR TO FITMENT

29. Route the Trailer Harness 'BLACK' reverse wire (1) along the rear of the vehicle and towards the vehicle reverse 2-way connector (2).
30. Following the table below, connect the ezy tap (3) to the vehicle 'GREEN' reverse signal wire (4).
31. Connect the Trailer Harness reverse terminal (5) to ezy tap (3).

Function	Trailer Patch	Vehicle Connector
REVERSE	BLACK	GREEN



32. Test the Trailer Harness function using a Light Board or multimeter.
33. Secure all Harnesses using cables ties (not supplied).
34. Re-fit all removed parts and secure all fasteners, ensuring there are no squeaks or rattles.
35. Place the instructions in the glove box after fitment.

Issue Date 06-04-11

Page 7

Part No: 100060-WL

Hayman Reese (Cequent)
PO Box 4050, Dandenong South VIC 3164
Phone 1800 812 017 Email info@haymanreese.com.au

www.haymanreese.com.au

