

# INSTALLATION INSTRUCTIONS



R2614W-TO SUIT FORD FALCON SEDAN INCLUDING GAS TO SUIT FG FALCON SEDAN  
ENSURE INSTRUCTIONS ARE UNDERSTOOD BEFORE INSTALLATION.

**Rating Braked 2300 Kg**  
**Rating Unbraked 750 Kg**  
**Max Static Ball Load 230 Kg**

## Warning:

1. Do not, drill, cut, weld or otherwise modify the towbar.
2. If you are using electric welding on a motor vehicle, **always** check that the vehicle is not equipped with electronic engine or instrument management equipment. Failure to do so could **destroy** any onboard computers. If in doubt, check with the vehicle's manufacturer.

## General:

1. Ensure all hardware items have been included refer to assembly diagram.
2. It is recommended that the instructions are read through and completely understood before making any attempt to fit this product.
3. Be wary of any changes to vehicle designs or other accessories that may conflict with the installation of this product.
4. Before drilling ensure that the area is clear of fuel, electrical & other components.
5. All holes drilled into the body panels shall have all burrs & swarf removed then coated with a suitable rust preventative paint.
6. The high tensile fasteners supplied with this product were used to achieve the specified rating. If replacement is required ensure that fasteners of the same rating & quality are used. Contact an authorised **Hayman Reese** dealer if further information is required.
7. Ensure that all hardware is fastened to torque list below check fasteners on regular basis.
8. Towbar load rating sticker provided with this product shall be conspicuously located on inside rear end of the driver's door. **(See diagram below).**
9. Hayman Reese recommends that you check your tow ball to ensure that it complies with the Australian standards **AS 4177.2**.
10. **PLEASE NOTE:** It is advised to remove your lug or tbn when not actually towing so as to produce a clear view of the vehicles registration plate if obscured, and to also provide maximum available departure angle.

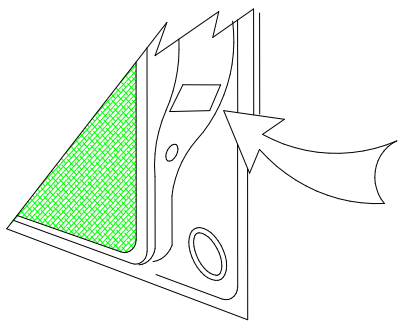
## Tow bar Maintenance and Care.

Hayman Reese recommends that bolt torque's, as listed below, are routinely and regularly inspected and checked for correct tension. Replace any worn or defective parts.

We recommended to remove Tow Ball Mounts (TBM's, tongues or lugs) when not being used for any considerable length of time.

So as to avoid injury, when not towing it is suggested that the tongue, Pull Pin and R-clip are removed then stored in a safe, clean and dry place, away from excessive moisture.

Hitch Pull Pins and spring "R" clips are regularly checked for proper installation. Replace any worn or defective parts.



**Place load rating sticker  
inside driver's door here**

### RECOMMENDED ASSEMBLY TORQUE LISTING

<u>Diameter</u>	<u>Grade 8.8 Bolt</u>
M6	9.5 Nm
M8	21.7 Nm
M10	43.4 Nm
M12	77.3 Nm
M16	189.8 Nm

### **FOR TOWING PURPOSES ONLY**

**For towing capacity details please refer to vehicle owner's manual or to the manufacturer. Overloading can void your warranties.**

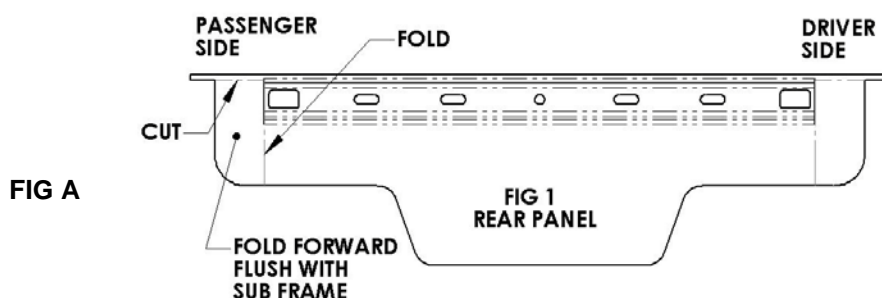
# INSTALLATION INSTRUCTIONS

R2614W-TO SUIT FORD FALCON SEDAN INCLUDING GAS TO SUIT FG FALCON SEDAN  
ENSURE INSTRUCTIONS ARE UNDERSTOOD BEFORE INSTALLATION.



## FG FALCON SEDAN INCLUDING GAS ONLY INSTRUCTIONS

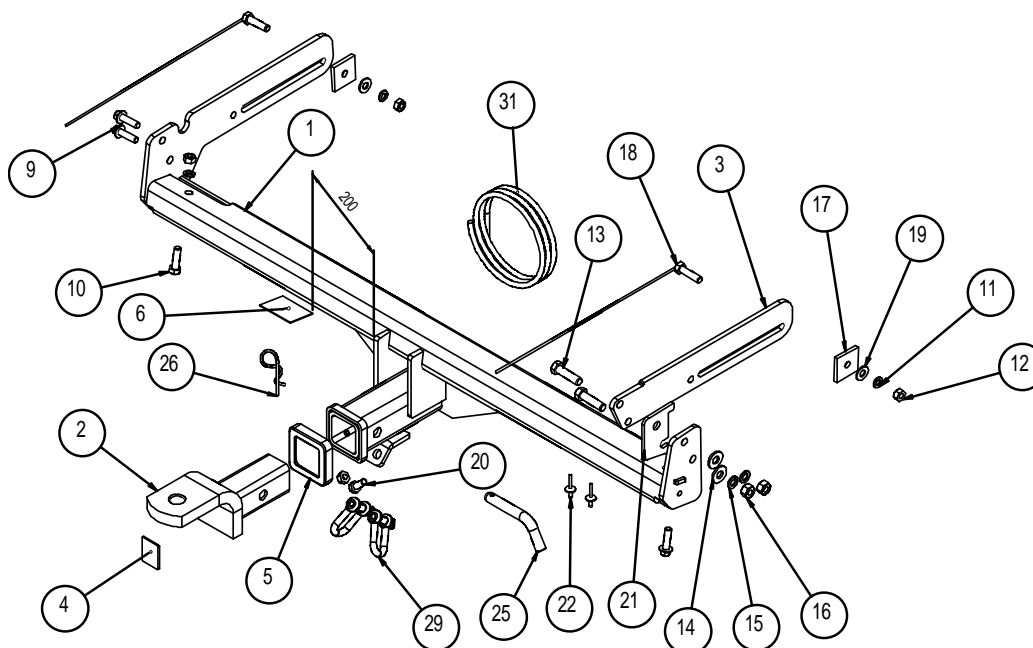
1. Ensure all hardware items have been included
2. Remove bumper via.
  - a. Remove 3 plastic trim buttons and 1 self-taping screw from each wheel arch.
  - b. Remove 3 plastic trim buttons from spear wheel well.
  - c. Remove plastic trim buttons from rear ¼ trim and fold forward.
  - d. Remove 4 x 5mm nuts from below tail light assemblies.
  - e. Remove bumper.
3. Remove two rear most pop rivets from heat shield to gain access to side of sub frame see fig 7.
4. Cut rear panel & impact beam as per figs A on page 2& fig 8 on page 4 then coat with anti rust paint.
5. Mark then drill driver side chassis rail as per fig 10 on page 4 with 11mm drill bit.
6. Temporarily fit towbar using one taptite bolt per side.
7. Mark and drill 11mm hole forward end of slot on passenger side arm.
8. Mark and drill 11mm hole for vertical holes in cross tube on passenger side.
9. Mark and drill two horizontal 12.5mm holes through driver side arm.
10. Using loose plate with Ø14 holes align with holes drilled in step 5 & 7 and hold in place with masking tape or similar making sure that passenger side loose plate is between side arm & sub frame.
11. Fit remaining bolts, nuts flat & spring washers with bolt on chassis plate to the inside of the chassis rail then tighten to torque listing below.
12. Refit bumper in reverse of step 2 E to A.
13. Refit exhaust heat shield with pop rivets supplied.
14. Note electrical trailer plug to be mounted on under side of bumper or a hang out of boot type.
15. Bar is shipped with chassis plate fastened to the bar with M10 nuts & bolts these bolts & nuts are to be discarded.



# INSTALLATION INSTRUCTIONS



R2614W-TO SUIT FORD FALCON SEDAN INCLUDING GAS TO SUIT FG FALCON SEDAN  
ENSURE INSTRUCTIONS ARE UNDERSTOOD BEFORE INSTALLATION.



ITEM NO.	DESCRIPTION	QTY.
1	WELDED ASSEMBLY	1
2	T.B.MOUNT	1
3	CHASSIS PLATE	1
4	H.R STICKER	1
5	Hitch Box Collar Cover	1
6	CP label sticker	1
7	ASSEMBLY BOLT PACK	1
8	PLASTIC SHEET BAG 250x350	1
9	BOLT TAPTITE M10x30 1.5P	3
10	M10 x 35 1.5P BOLT	1
11	M10 X 3.5 X 2.2 SPRING WSHR	3
12	NUT M10 x 1.5 Z/P HX NUTS	4
13	M12 x 45 1.75P BOLT	2
14	WASHER M12x28.8x3mm	2
15	M12 X 4.0 X 2.5 SPRING WASHER	2
16	M12-1.75 Z/P HX NUTS	2
17	LOOSE PLT 45 x 6 x 45 Ø11	2
18	M10 x 40 1.5P BOLT & WIRE 400	2
19	Washer Flat M10 x 23 x 2 z/p	2
20	BOLT M10-1.50 x 25	1
21	PACKER PLATE	1
22	LARGE FLANGE RIVET ASL6-4	2
23	BRAND BAG	1
24	PLASTIC SHEET BAG 200x500	1
25	PULL PIN	1
26	SPRING COTTER PIN	1
27	FITTING INSTRUCTIONS	1
28	Warranty Card	1
29	D' SHACKLE	2
30	LRL label sticker	1
31	WIRING LOOM	1

# INSTALLATION INSTRUCTIONS

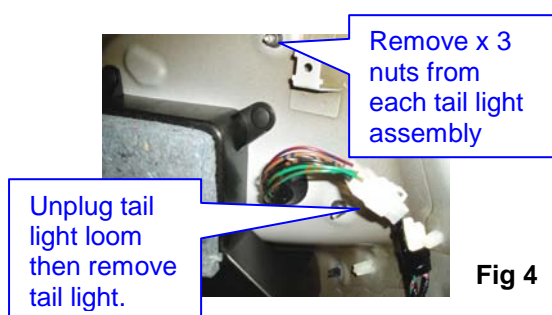
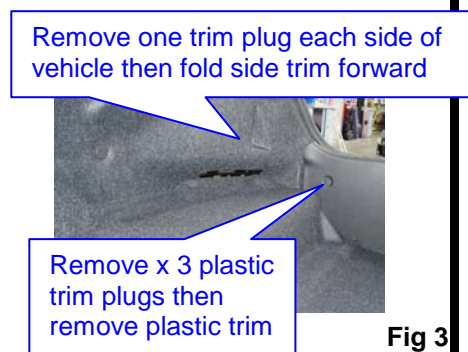
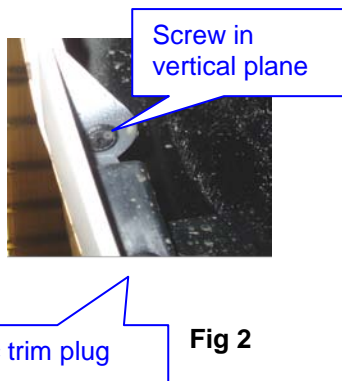
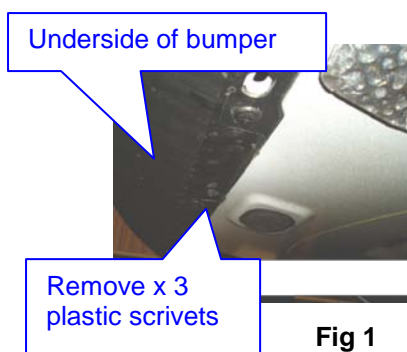
R2614W-TO SUIT FORD FALCON SEDAN INCLUDING GAS TO SUIT FG FALCON SEDAN  
ENSURE INSTRUCTIONS ARE UNDERSTOOD BEFORE INSTALLATION.



## FG FALCON SEDAN INCLUDING XR6, XR8, G6 & G6E INSTRUCTIONS

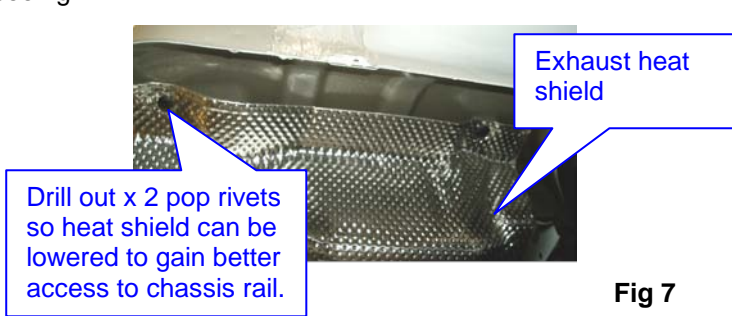
### 11. Remove rear bumper bar skin via

- Remove 3 x plastic scrivets from underside of bumper bar skin see fig 1.
- Remove 3 x plastic trim plugs from each wheel arch, one screw in the vertical plane & one screw in the horizontal plane see fig 2.
- Remove 3x plastic trim plugs from plastic trim inside boot cavity see fig 3.
- Remove plastic trim then fold carpet forward rear seats may need to be folded forward.
- Remove 1 x plastic trim plug each side of side carpet trim then fold back to gain access to tail light assemblies.
- Remove 3 x nuts from each tail light assembly then unplug wiring loom see fig 4.
- Remove tail light assemblies ensuring that grommet is pushed through panel see fig 5.
- Caution** two person lift required flex bumper bar skin out at the sides then pull rear ward some force may be required to remove.



### 12. Lower rear muffler & heat shield via

- Lower rear muffler by removing the three rear most rubber hangers from exhaust hangers see fig 6.
- Drill out two pop rivets so that exhaust heat shield can be lowered to gain better access to chassis rail for fitment of towbar see fig 7.



# INSTALLATION INSTRUCTIONS



R2614W-TO SUIT FORD FALCON SEDAN INCLUDING GAS TO SUIT FG FALCON SEDAN  
ENSURE INSTRUCTIONS ARE UNDERSTOOD BEFORE INSTALLATION.

## 13. Mark out then cut rear panel via

- Mark out rear panels as shown in figures 8 & 9 then cut section of panel out with tin snips or small hacksaw.
- Ensure that all sharp edges & burrs are removed and that all raw edges are coated with a suitable rust preventative paint.

Driver's side shown measure in 25mm from outside edge of panel as shown then mark from 25mm point 45 degrees to outer edge of panel.

Cut sections of panel away using tin snips or suitable hacksaw remove all sharp edges & coat raw edges with rust preventative paint.

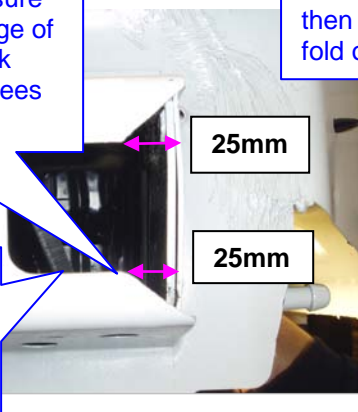


Fig 8

Passenger side shown mark line from 60mm point to 130mm point then cut section of panel then fold over towards front of vehicle.

Measure up 130mm from bottom edge of panel then mark

Measure out 60mm from edge of panel

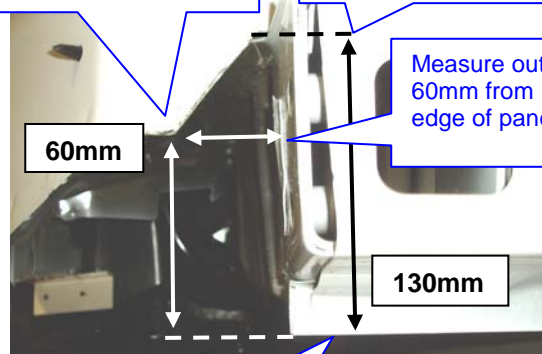


Fig 9

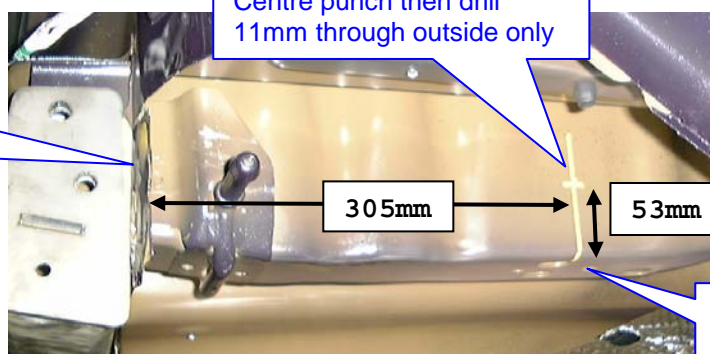
Measure up 60mm from bottom edge of back panel.

## 14. Mark out hole on outer side of chassis rails either side of vehicle.

- Mark out hole position as shown in figure 10 centre punch then pilot drill through the outside only then drill through 11mm outside panel only.
- Repeat processes for passenger side of the vehicle ensure that all swarf sharp edges & burrs are cleaned and that all raw edges are coated with suitable rust preventative paint.

Fig 10

Driver side shown passenger side is a mirror image



Centre punch then drill 11mm through outside only

Measure up from bottom of panel.

## 15. Offer tow bar to vehicle sub frame

- Offer tow bar to the vehicle sub frame then fasten with driver side vertical mount with taptite bolt provided see fig11.
- Fasten passenger side horizontal mounts with taptite bolts provided see fig 12.
- Drill up through vertical mount on passenger side see fig 12.
- Fit then fasten passenger side vertical M10 bolt nut & washers provided see assembly detail
- Diagram for correct orientation of hardware.

# INSTALLATION INSTRUCTIONS

R2614W-TO SUIT FORD FALCON SEDAN INCLUDING GAS TO SUIT FG FALCON SEDAN  
ENSURE INSTRUCTIONS ARE UNDERSTOOD BEFORE INSTALLATION.

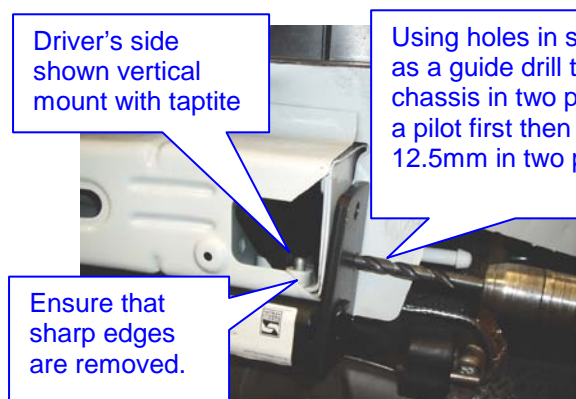


Fig 11

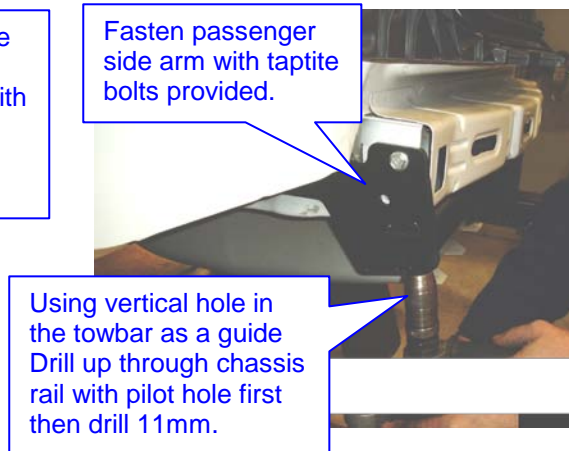


Fig 12

## 16. Fitment of loose arm & spacer plate

- Fit loose arm inside the drivers chassis rail see fig 8 then feed M10 bolt on wire up the chassis rail to align with M11 hole drilled in step 14a see fig 10.
- Fasten loosely with loose plate washer & nut provided see assembly detail for correct orientation.
- Fit remaining bolts nuts flat & spring washers with bolt on loose arm.
- Fit M10 bolt on wire up the chassis rail on the passenger side to align with 11mm hole drilled in step 14b see fig 10.
- Ensure that the loose plate is fitted between the towbar arm & the chassis rail see assembly detail for correct orientation of components.
- Fasten all hardware to the torque listing.

## 17. Mark out section of bumper bar skin for bumper cut

- Mark out & cut rear bumper bar skin as shown with small hacksaw or similar device ensure that all raw edges are filed clean of swarf & burrs.

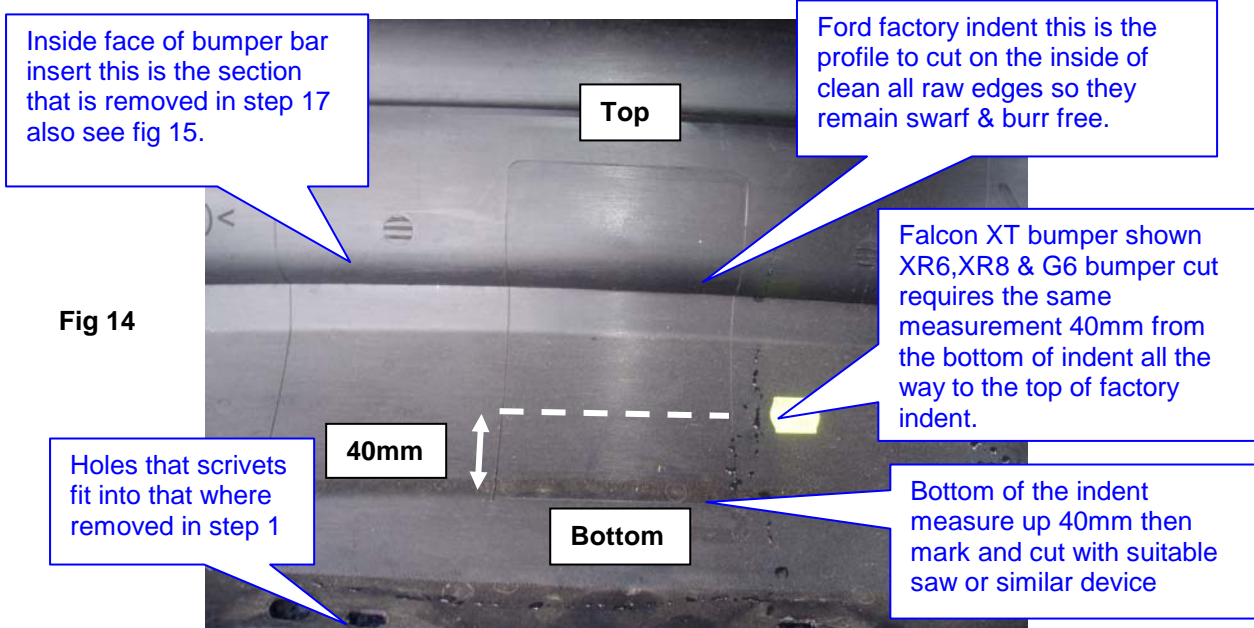


Fig 14

# INSTALLATION INSTRUCTIONS

R2614W-TO SUIT FORD FALCON SEDAN INCLUDING GAS TO SUIT FG FALCON SEDAN  
ENSURE INSTRUCTIONS ARE UNDERSTOOD BEFORE INSTALLATION.



## 18. Refit the heat shield via

- a. Refit the exhaust heat shield with pop rivets provided see fig 7.
- b. Refit the rear muffler to the three rear most exhaust hangers see fig 6.
- c. Refit the bumper bar in the reverse of steps fig 5 through to figure 1.
- d. Note that electrical trailer plug is to be mounted on the underside of bumper bar skin or hang out of the boot see fig 15.



Fig 15

**HAYMAN REESE**  
**PART No: 100319-WL**  
**FORD EL FALCON**  
**FORD FG FALCON/G6/G6E/G6E TURBO**  
**INSTALLATION INSTRUCTIONS**

PLEASE ENSURE THAT INSTRUCTIONS ARE UNDERSTOOD PRIOR TO FITMENT

**Wiring Loom Installation Instructions**

**FORD EL FALCON**  
**FORD FG FALCON/G6/G6E/G6E TURBO**  
**Part No: 100319-WL**

**Tail Harness Length Required: 1200mm**  
**RPA Override Switch Part No: 04848 (If Fitted)**

**FORD EL FALCON: Pages 2 – 5**  
**FORD FG FALCON/G6/G6E TURBO: Pages 6 - 8**

**Wiring Loom Installation Time: Approx 30 Mins**

Issue Date 02-12-11

Page 1

Part No: 100319-WL

Hayman Reese (Cequent)  
PO Box 4050, Dandenong South VIC 3164  
Phone 1800 812 017 Email [info@haymanreese.com.au](mailto:info@haymanreese.com.au)

[www.haymanreese.com.au](http://www.haymanreese.com.au)



**HAYMAN REESE**  
**PART No: 100319-WL**  
**FORD EL FALCON**  
**FORD FG FALCON/G6/G6E/G6E TURBO**  
**INSTALLATION INSTRUCTIONS**

PLEASE ENSURE THAT INSTRUCTIONS ARE UNDERSTOOD PRIOR TO FITMENT

The following steps are for Ford El Falcon models only. For Ford FG Falcon/G6/G6E/G6E Turbo models, please proceed to Page 6.

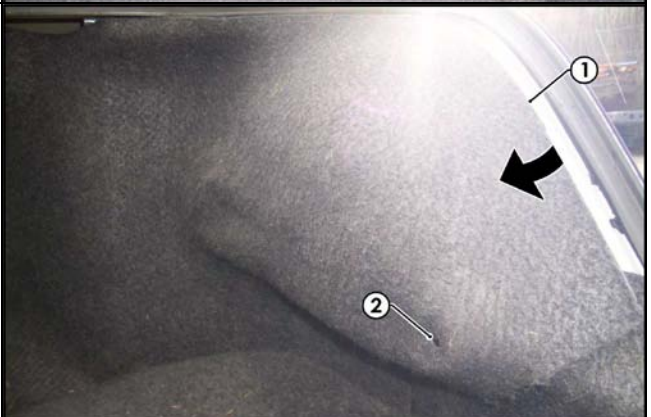
1. In the luggage compartment, remove the floor carpet cover (1).



2. Release the panel clip (1) from the RHS luggage compartment trim.



3. Dislodge the RHS luggage compartment trim (1) by first releasing the panel clip (2).



Issue Date 02-12-11

Page 2

Part No: 100319-WL

Hayman Reese (Cequent)  
PO Box 4050, Dandenong South VIC 3164  
Phone 1800 812 017 Email [info@haymanreese.com.au](mailto:info@haymanreese.com.au)

[www.haymanreese.com.au](http://www.haymanreese.com.au)



# HAYMAN REESE

## PART No: 100319-WL

### FORD EL FALCON

### FORD FG FALCON/G6/G6E/G6E TURBO

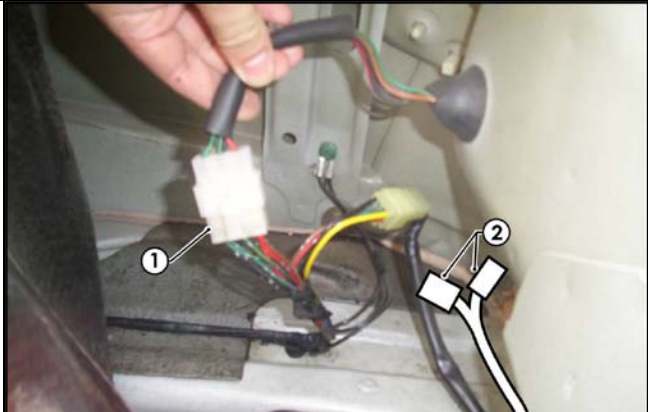
# INSTALLATION INSTRUCTIONS

PLEASE ENSURE THAT INSTRUCTIONS ARE UNDERSTOOD PRIOR TO FITMENT

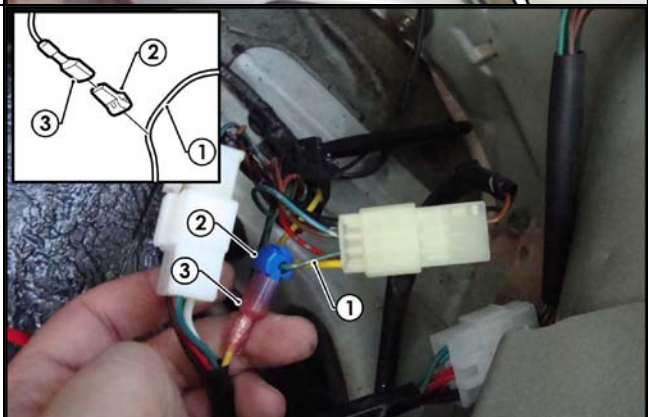
4. Drill a Ø30mm hole (1) in the spare wheel well sheet metal.
5. File any rough or sharp edges and spray on rust inhibitor.



6. Locate and disconnect the RHS tail light connectors (1).
7. Connect the trailer patch (P/No 100319-WL) connectors (2) between the tail light connectors (1).



8. Using a multimeter, locate the vehicle 'GREEN' LHS indicator signal wire (1).
9. Following the table below, connect the ezy-tap (2) to the vehicle 'GREEN' LHS indicator signal wire (1).
10. Connect the trailer patch terminal (3) to the ezy-tap (2).



Function	Trailer Patch	Vehicle Connector
L.IND	YELLOW	GREEN

Issue Date 02-12-11

Page 3

Part No: 100319-WL

Hayman Reese (Cequent)  
PO Box 4050, Dandenong South VIC 3164  
Phone 1800 812 017 Email [info@haymanreese.com.au](mailto:info@haymanreese.com.au)

[www.haymanreese.com.au](http://www.haymanreese.com.au)



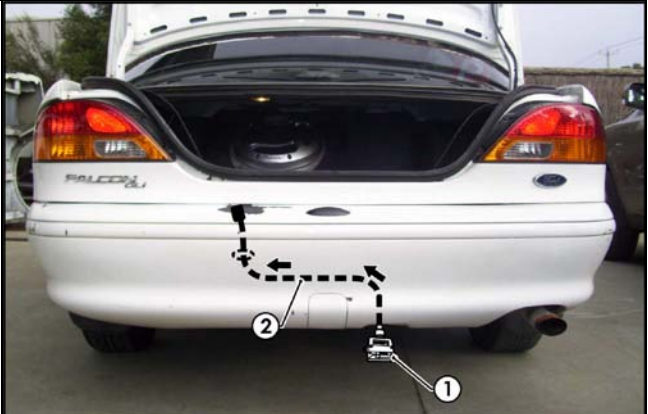
**HAYMAN REESE**  
**PART No: 100319-WL**  
**FORD EL FALCON**  
**FORD FG FALCON/G6/G6E/G6E TURBO**  
**INSTALLATION INSTRUCTIONS**

PLEASE ENSURE THAT INSTRUCTIONS ARE UNDERSTOOD PRIOR TO FITMENT

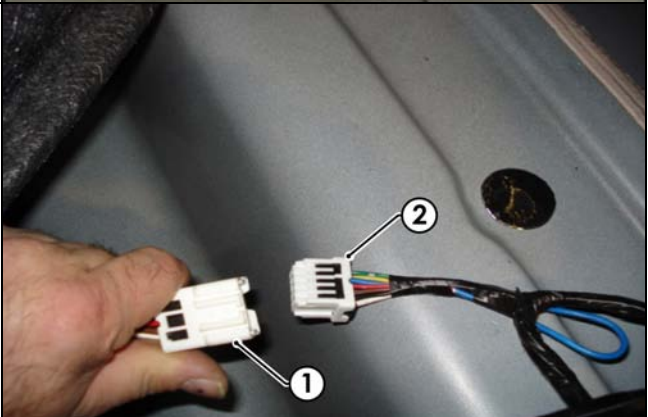
11. Route the trailer patch (1) across the rear of the luggage compartment towards the previously drilled out hole.



12. Mount the trailer socket (1) to the towbar mounting bracket using M4 fasteners (not supplied).  
13. Route the tail harness (2) (tail length 1200mm) along the towbar and up through the previously drilled out hole.  
14. Ensure the tail harness grommet is seated correctly and makes a good seal.  
15. Secure the grommet in place using a cable tie (not supplied).



16. Connect the tail harness 8-way connector (1) to the trailer patch 8-way mating connector (2).



Issue Date 02-12-11

Page 4

Part No: 100319-WL

Hayman Reese (Cequent)  
PO Box 4050, Dandenong South VIC 3164  
Phone 1800 812 017 Email [info@haymanreese.com.au](mailto:info@haymanreese.com.au)

[www.haymanreese.com.au](http://www.haymanreese.com.au)



**HAYMAN REESE**  
**PART No: 100319-WL**  
**FORD EL FALCON**  
**FORD FG FALCON/G6/G6E/G6E TURBO**  
**INSTALLATION INSTRUCTIONS**

**PLEASE ENSURE THAT INSTRUCTIONS ARE UNDERSTOOD PRIOR TO FITMENT**

<ul style="list-style-type: none"><li>17. Test the trailer harness function using a light board or multimeter.</li><li>18. Secure all harnesses using cable ties (not supplied).</li><li>19. Re-fit all removed parts and secure all fasteners, ensuring there are no squeaks or rattles.</li><li>20. Place the instructions in the glove box after fitment.</li></ul>	
--	--

**Issue Date 02-12-11**

**Page 5**

**Part No: 100319-WL**

Hayman Reese (Cequent)  
PO Box 4050, Dandenong South VIC 3164  
Phone 1800 812 017 Email [info@haymanreese.com.au](mailto:info@haymanreese.com.au)

[www.haymanreese.com.au](http://www.haymanreese.com.au)



**HAYMAN REESE**  
**PART No: 100319-WL**  
**FORD EL FALCON**  
**FORD FG FALCON/G6/G6E/G6E TURBO**  
**INSTALLATION INSTRUCTIONS**

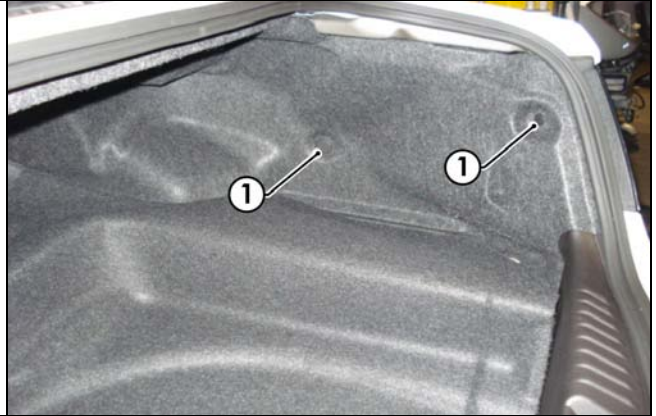
PLEASE ENSURE THAT INSTRUCTIONS ARE UNDERSTOOD PRIOR TO FITMENT

The following steps are for the Ford FG Falcon/G6/G6E/G6E Turbo models only. For the Ford EL Falcon models, please refer to page 2.

1. In the luggage compartment, remove the floor carpet cover (1).



2. Release the panel clip (1) from the RHS luggage compartment trim.



3. Peel open the RHS luggage compartment trim (1) to gain access to the RHS tail light connector.



Issue Date 02-12-11

Page 6

Part No: 100319-WL

Hayman Reese (Cequent)  
PO Box 4050, Dandenong South VIC 3164  
Phone 1800 812 017 Email [info@haymanreese.com.au](mailto:info@haymanreese.com.au)

[www.haymanreese.com.au](http://www.haymanreese.com.au)



**HAYMAN REESE**  
**PART No: 100319-WL**  
**FORD EL FALCON**  
**FORD FG FALCON/G6/G6E/G6E TURBO**  
**INSTALLATION INSTRUCTIONS**

PLEASE ENSURE THAT INSTRUCTIONS ARE UNDERSTOOD PRIOR TO FITMENT

4. Locate and disconnect the RHS tail light connector (1).

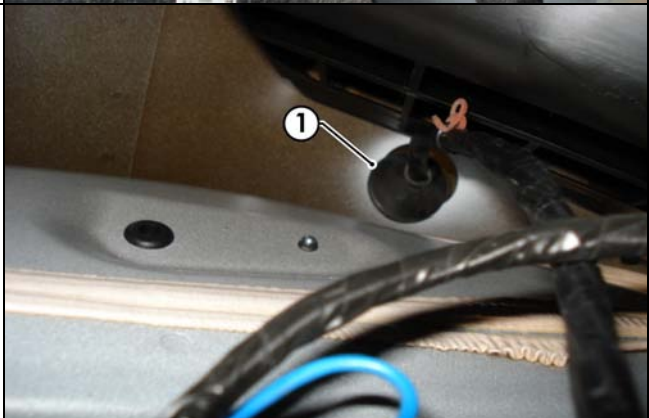


5. Connect the trailer patch harness (P/No 100319-WL) connectors (1) between the tail light connectors (2).



6. Locate the vehicle blanking grommet (1) and remove it.

**Note: If the vehicle is fitted with an RPA kit, drill a Ø30mm access hole near the existing grommet for tail harness routing.**



Issue Date 02-12-11

Page 7

Part No: 100319-WL


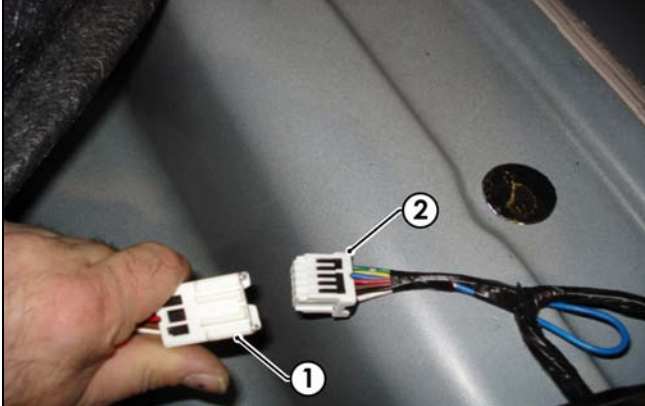
Hayman Reese (Cequent)  
PO Box 4050, Dandenong South VIC 3164  
Phone 1800 812 017 Email [info@haymanreese.com.au](mailto:info@haymanreese.com.au)

[www.haymanreese.com.au](http://www.haymanreese.com.au)



**HAYMAN REESE**  
**PART No: 100319-WL**  
**FORD EL FALCON**  
**FORD FG FALCON/G6/G6E/G6E TURBO**  
**INSTALLATION INSTRUCTIONS**

PLEASE ENSURE THAT INSTRUCTIONS ARE UNDERSTOOD PRIOR TO FITMENT

<p>7. Mount the trailer socket (1) to the towbar mounting bracket using M4 fasteners (not supplied).</p> <p><b>Note: The grommet must be moved along the harness to the desired location.</b></p> <p>8. Route the tail harness (2) (tail length 1200mm) along the towbar and up through the previously drilled out hole.</p> <p>9. Ensure the tail harness grommet is seated correctly and makes a good seal.</p> <p>10. Secure the grommet in place using a cable tie (not supplied).</p>	
<p>11. Connect the tail harness 8-way connector (1) to the trailer patch 8-way mating connector (2).</p>	
<p>12. Test the trailer harness function using a light board or multimeter.</p> <p>13. Secure all harnesses using cable ties (not supplied).</p> <p>14. Re-fit all removed parts and secure all fasteners, ensuring there are no squeaks or rattles.</p> <p>15. Place the instructions in the glove box after fitment.</p>	

Issue Date 02-12-11

Page 8

Part No: 100319-WL

Hayman Reese (Cequent)  
PO Box 4050, Dandenong South VIC 3164  
Phone 1800 812 017 Email [info@haymanreese.com.au](mailto:info@haymanreese.com.au)

[www.haymanreese.com.au](http://www.haymanreese.com.au)

