

# INSTALLATION INSTRUCTIONS



RL2616W-TO SUIT FORD FG SEDAN SUITS XT MODEL ONLY  
ENSURE INSTRUCTIONS ARE UNDERSTOOD BEFORE INSTALLATION.

Rating Braked 1600 Kg  
Rating Unbraked 750 Kg  
Max Static Ball Load 160 Kg

## Warning:

1. Do not, drill, cut, weld or otherwise modify the towbar.
2. If you are using electric welding on a motor vehicle, **always** check that the vehicle is not equipped with electronic engine or instrument management equipment. Failure to do so could **destroy** any onboard computers. If in doubt, check with the vehicle's manufacturer.

## General:

1. Ensure all hardware items have been included refer to assembly diagram.
2. It is recommended that the instructions are read through and completely understood before making any attempt to fit this product.
3. Be wary of any changes to vehicle designs or other accessories that may conflict with the installation of this product.
4. Before drilling ensure that the area is clear of fuel, electrical & other components.
5. All holes drilled into the body panels shall have all burrs & swarf removed then coated with a suitable rust preventative paint.
6. The high tensile fasteners supplied with this product were used to achieve the specified rating. If replacement is required ensure that fasteners of the same rating & quality are used. Contact an authorised **Hayman Reese** dealer if further information is required.
7. Ensure that all hardware is fastened to torque list below check fasteners on regular basis.
8. Towbar load rating sticker provided with this product shall be conspicuously located on inside rear end of the driver's door. **(See diagram below).**
9. Hayman Reese recommends that you check your tow ball to ensure that it complies with the Australian standards **AS 4177.2**.
10. **PLEASE NOTE:** It is advised to remove your lug or tbn when not actually towing so as to produce a clear view of the vehicles registration plate if obscured, and to also provide maximum available departure angle.

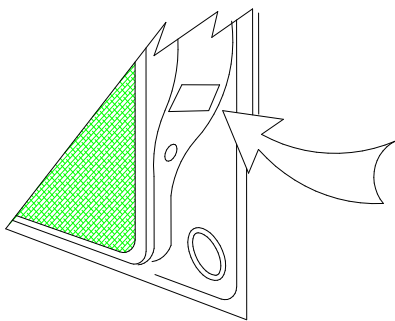
## Tow bar Maintenance and Care.

Hayman Reese recommends that bolt torque's, as listed below, are routinely and regularly inspected and checked for correct tension. Replace any worn or defective parts.

We recommended to remove Tow Ball Mounts (TBM's, tongues or lugs) when not being used for any considerable length of time.

So as to avoid injury, when not towing it is suggested that the tongue, Pull Pin and R-clip are removed then stored in a safe, clean and dry place, away from excessive moisture.

Hitch Pull Pins and spring "R" clips are regularly checked for proper installation. Replace any worn or defective parts.



Place load rating sticker  
inside driver's door here

### RECOMMENDED ASSEMBLY TORQUE LISTING

<u>Diameter</u>	<u>Grade 8.8 Bolt</u>
M6	9.5 Nm
M8	21.7 Nm
M10	43.4 Nm
M12	77.3 Nm
M16	189.8 Nm

### FOR TOWING PURPOSES ONLY

For towing capacity details please refer to vehicle owner's manual or to the manufacturer. Overloading can void your warranties.

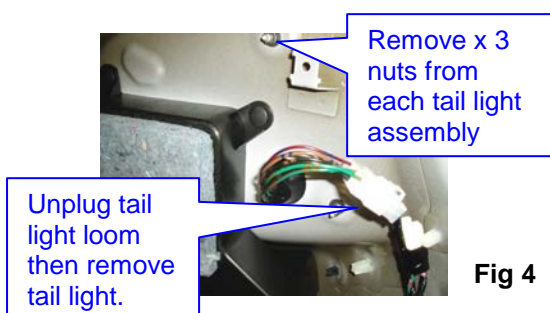
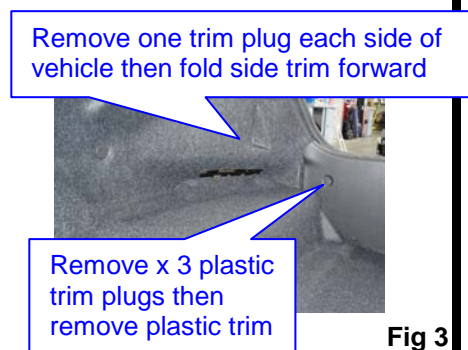
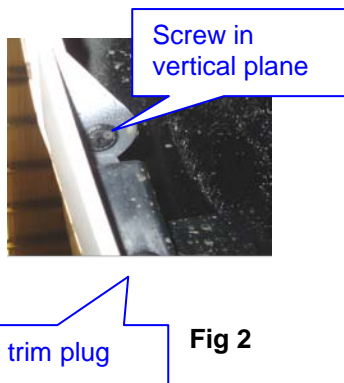
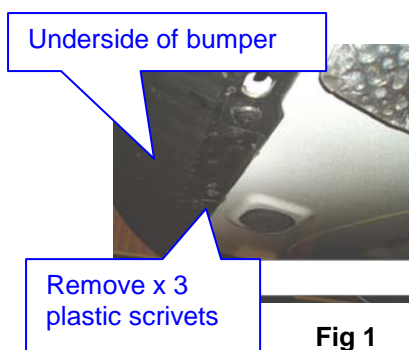
# INSTALLATION INSTRUCTIONS



RL2616W-TO SUIT FORD FG SEDAN SUITS XT MODEL ONLY  
ENSURE INSTRUCTIONS ARE UNDERSTOOD BEFORE INSTALLATION.

## 11. Remove rear bumper bar skin via

- Remove 3 x plastic scrivers from underside of bumper bar skin see fig 1.
- Remove 3 x plastic trim plugs from each wheel arch, one screw in the vertical plane & one screw in the horizontal plane see fig 2.
- Remove 3x plastic trim plugs from plastic trim inside boot cavity see fig 3.
- Remove plastic trim then fold carpet forward rear seats may need to be folded forward.
- Remove 1 x plastic trim plug each side of side carpet trim then fold back to gain access to tail light assemblies.
- Remove 3 x nuts from each tail light assembly then unplug wiring loom see fig 4.
- Remove tail light assemblies ensuring that grommet is pushed through panel see fig 5.
- Remove 2 x screws from underneath taillight cavity see fig 5.
- Remove 4 x plastic scrivers from underneath taillight cavity see fig 5.
- Caution** two person lift required flex bumper bar skin out at the sides then pull rear ward some force may be required to remove.



## 12. Offer tow bar to vehicle sub frame

- Offer tow bar to the vehicle sub frame then fasten with driver side vertical mount with taptime bolt provided see fig 6.
- Fasten passenger side horizontal mounts with taptime bolts provided see fig 7.
- Using holes on driver's side plate as a guide drill pilot holes first then drill through 12.5mm see fig 8.
- Fit M 12 x 35 bolts flat & spring washers provided ensure that packer plate is fitted between side plate of towbar & end of chassis mount see assembly detail for correct orientation of components.



# INSTALLATION INSTRUCTIONS

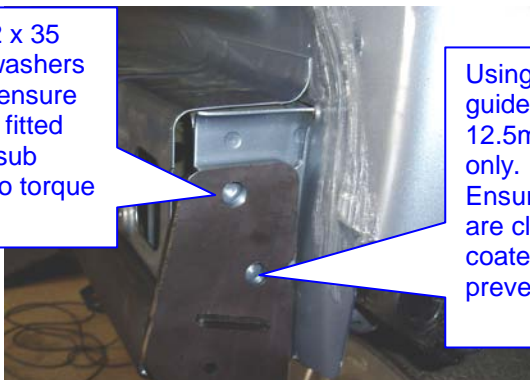


RL2616W-TO SUIT FORD FG SEDAN SUITS XT MODEL ONLY  
ENSURE INSTRUCTIONS ARE UNDERSTOOD BEFORE INSTALLATION.

After drilling fit M12 x 35 bolts flat & spring washers with nuts provided ensure that spacer plate is fitted between towbar & sub frame then fasten to torque listing.

Using holes in side plates as a guide first pilot drill then drill out 12.5mm through outer panel only.  
Ensure that all swarf & filings are cleaned & all raw edges are coated with suitable rust preventative paint

Fig 8



## 13. Drill centre holes via

- Using the holes in the towbar as a guide first pilot drill then drill out 11mm in two places see fig 9.
- Fit two bolt & loose plates on wire through access points on the rear panel of the vehicle so that bolts drop down through the holes just drilled through the panel.
- Fasten with M10 whizz nuts provided fasten to torque listing.
- Ensure that the wire on bolts is inside the chassis panel and not sticking out.

Using holes in cross tube as a guide drill up through bottom of panel pilot first then drill 11mm.

Feed bolt with plate on wire through these open panels each side of towbar.

Fig 9



## 14. Fig 10 rear bumper bar cut for base XT model Falcon only Note that bumper cut is only required for FG falcon models only.

- Mark out then cut the rear bumper bar skin as shown in fig 10 ensure that all swarf and raw edges are filed so that cut is neat.

Inside face of rear bumper bar skin

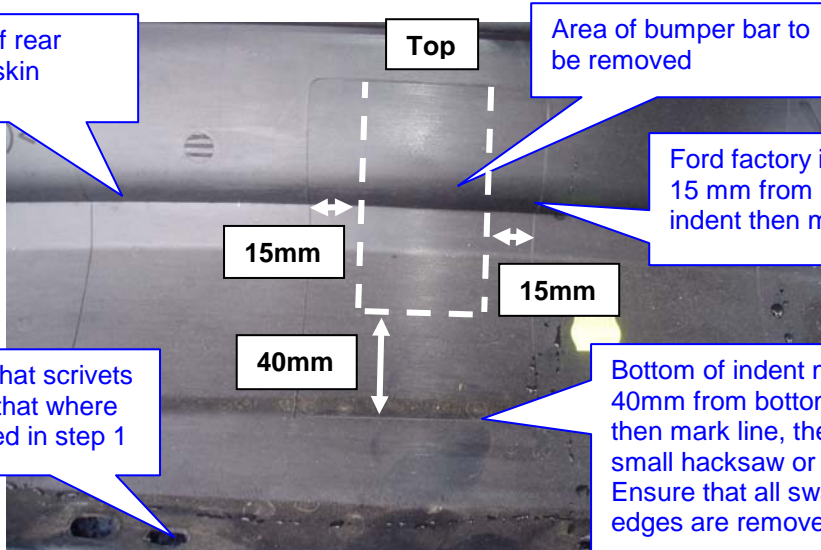
Area of bumper bar to be removed

Ford factory indent measure in 15 mm from each edge of indent then mark lines.

Fig 10

Holes that scrivets fit into that where removed in step 1

Bottom of indent measure up 40mm from bottom of indent then mark line, then cut with small hacksaw or similar device Ensure that all swarf & sharp edges are removed.



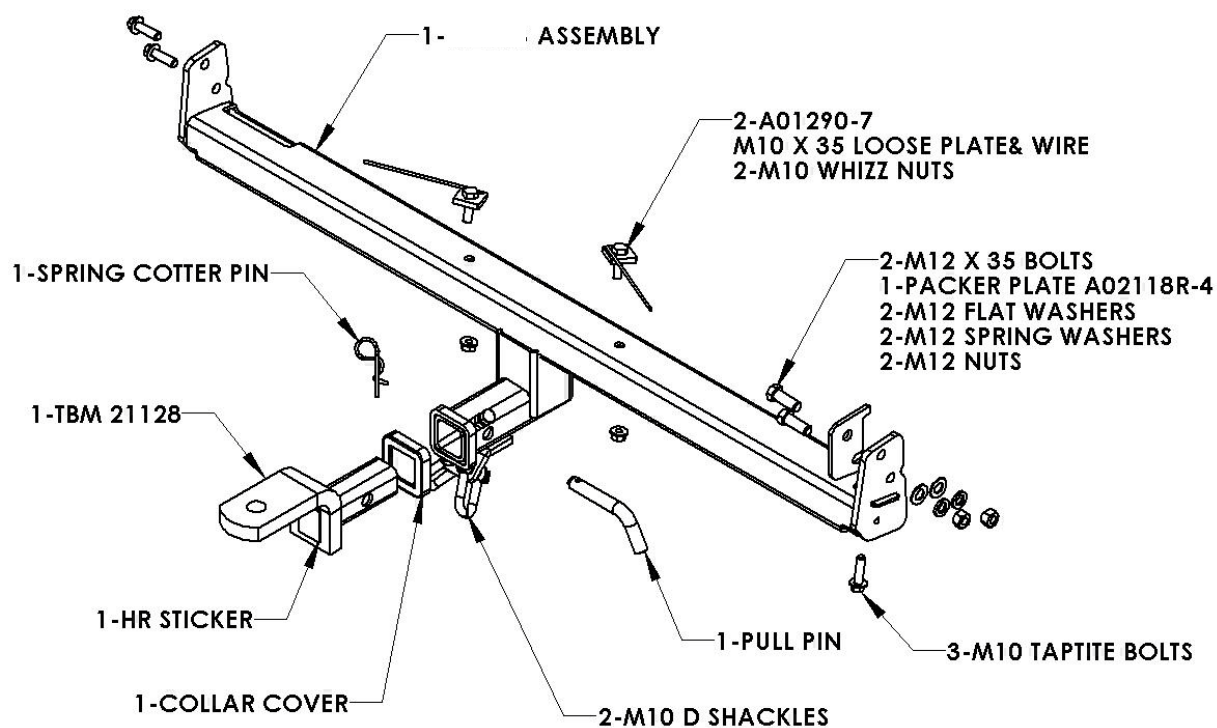
# INSTALLATION INSTRUCTIONS



RL2616W-TO SUIT FORD FG SEDAN SUITS XT MODEL ONLY  
ENSURE INSTRUCTIONS ARE UNDERSTOOD BEFORE INSTALLATION.

## 15. Refit the rear bumper bar skin

- a. Refit the rear bumper bar skin in the reverse of steps 11j through to 11a
- b. Fit shackles to chain connection point.



**HAYMAN REESE**  
**PART No: 100319-WL**  
**FORD EL FALCON**  
**FORD FG FALCON/G6/G6E/G6E TURBO**  
**INSTALLATION INSTRUCTIONS**

PLEASE ENSURE THAT INSTRUCTIONS ARE UNDERSTOOD PRIOR TO FITMENT

**Wiring Loom Installation Instructions**

**FORD EL FALCON**  
**FORD FG FALCON/G6/G6E/G6E TURBO**  
**Part No: 100319-WL**

**Tail Harness Length Required: 1200mm**  
**RPA Override Switch Part No: 04848 (If Fitted)**

**FORD EL FALCON: Pages 2 – 5**  
**FORD FG FALCON/G6/G6E TURBO: Pages 6 - 8**

**Wiring Loom Installation Time: Approx 30 Mins**

Issue Date 02-12-11

Page 1

Part No: 100319-WL

Hayman Reese (Cequent)  
PO Box 4050, Dandenong South VIC 3164  
Phone 1800 812 017 Email [info@haymanreese.com.au](mailto:info@haymanreese.com.au)

[www.haymanreese.com.au](http://www.haymanreese.com.au)



**HAYMAN REESE**  
**PART No: 100319-WL**  
**FORD EL FALCON**  
**FORD FG FALCON/G6/G6E/G6E TURBO**  
**INSTALLATION INSTRUCTIONS**

PLEASE ENSURE THAT INSTRUCTIONS ARE UNDERSTOOD PRIOR TO FITMENT

The following steps are for Ford El Falcon models only. For Ford FG Falcon/G6/G6E/G6E Turbo models, please proceed to Page 6.

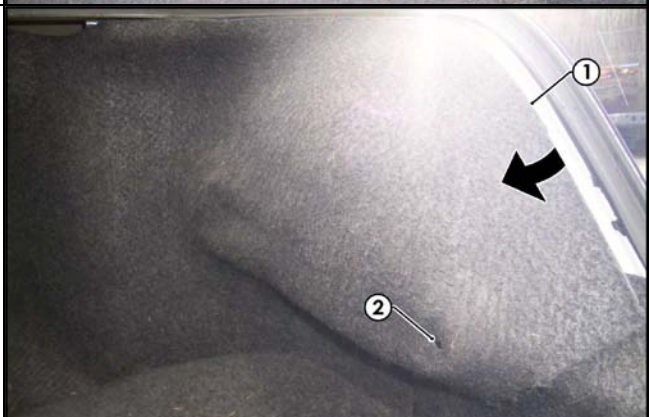
1. In the luggage compartment, remove the floor carpet cover (1).



2. Release the panel clip (1) from the RHS luggage compartment trim.



3. Dislodge the RHS luggage compartment trim (1) by first releasing the panel clip (2).



Issue Date 02-12-11

Page 2

Part No: 100319-WL

Hayman Reese (Cequent)  
PO Box 4050, Dandenong South VIC 3164  
Phone 1800 812 017 Email [info@haymanreese.com.au](mailto:info@haymanreese.com.au)

[www.haymanreese.com.au](http://www.haymanreese.com.au)



# HAYMAN REESE

## PART No: 100319-WL

### FORD EL FALCON

### FORD FG FALCON/G6/G6E/G6E TURBO

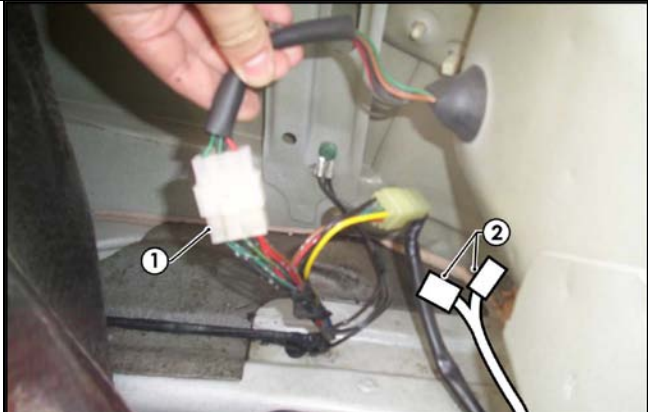
# INSTALLATION INSTRUCTIONS

PLEASE ENSURE THAT INSTRUCTIONS ARE UNDERSTOOD PRIOR TO FITMENT

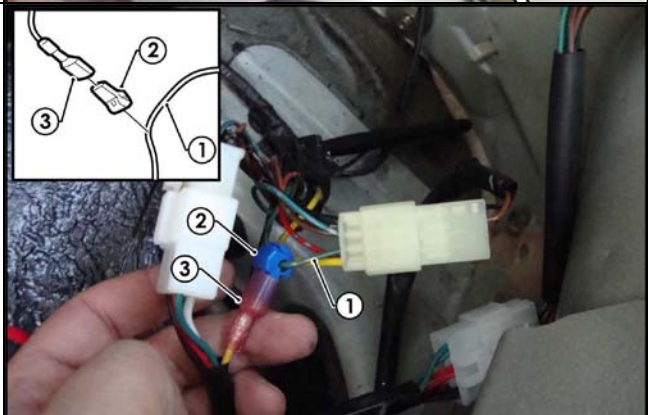
4. Drill a Ø30mm hole (1) in the spare wheel well sheet metal.
5. File any rough or sharp edges and spray on rust inhibitor.



6. Locate and disconnect the RHS tail light connectors (1).
7. Connect the trailer patch (P/No 100319-WL) connectors (2) between the tail light connectors (1).



8. Using a multimeter, locate the vehicle 'GREEN' LHS indicator signal wire (1).
9. Following the table below, connect the ezy-tap (2) to the vehicle 'GREEN' LHS indicator signal wire (1).
10. Connect the trailer patch terminal (3) to the ezy-tap (2).



Function	Trailer Patch	Vehicle Connector
L.IND	YELLOW	GREEN

Issue Date 02-12-11

Page 3

Part No: 100319-WL

Hayman Reese (Cequent)  
PO Box 4050, Dandenong South VIC 3164  
Phone 1800 812 017 Email [info@haymanreese.com.au](mailto:info@haymanreese.com.au)

[www.haymanreese.com.au](http://www.haymanreese.com.au)



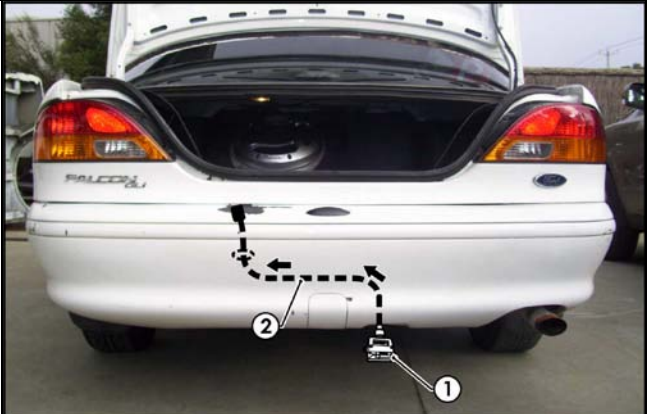
**HAYMAN REESE**  
**PART No: 100319-WL**  
**FORD EL FALCON**  
**FORD FG FALCON/G6/G6E/G6E TURBO**  
**INSTALLATION INSTRUCTIONS**

PLEASE ENSURE THAT INSTRUCTIONS ARE UNDERSTOOD PRIOR TO FITMENT

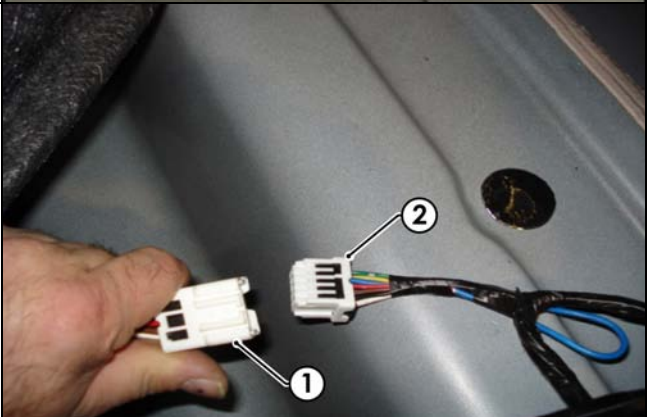
11. Route the trailer patch (1) across the rear of the luggage compartment towards the previously drilled out hole.



12. Mount the trailer socket (1) to the towbar mounting bracket using M4 fasteners (not supplied).  
13. Route the tail harness (2) (tail length 1200mm) along the towbar and up through the previously drilled out hole.  
14. Ensure the tail harness grommet is seated correctly and makes a good seal.  
15. Secure the grommet in place using a cable tie (not supplied).



16. Connect the tail harness 8-way connector (1) to the trailer patch 8-way mating connector (2).



Issue Date 02-12-11

Page 4

Part No: 100319-WL

Hayman Reese (Cequent)  
PO Box 4050, Dandenong South VIC 3164  
Phone 1800 812 017 Email [info@haymanreese.com.au](mailto:info@haymanreese.com.au)

[www.haymanreese.com.au](http://www.haymanreese.com.au)



**HAYMAN REESE**  
**PART No: 100319-WL**  
**FORD EL FALCON**  
**FORD FG FALCON/G6/G6E/G6E TURBO**  
**INSTALLATION INSTRUCTIONS**

**PLEASE ENSURE THAT INSTRUCTIONS ARE UNDERSTOOD PRIOR TO FITMENT**

- |  |  |
|--|--|
| <ol style="list-style-type: none"><li>17. Test the trailer harness function using a light board or multimeter.</li><li>18. Secure all harnesses using cable ties (not supplied).</li><li>19. Re-fit all removed parts and secure all fasteners, ensuring there are no squeaks or rattles.</li><li>20. Place the instructions in the glove box after fitment.</li></ol> |  |
|--|--|

**Issue Date 02-12-11**

**Page 5**

**Part No: 100319-WL**

Hayman Reese (Cequent)  
PO Box 4050, Dandenong South VIC 3164  
Phone 1800 812 017 Email [info@haymanreese.com.au](mailto:info@haymanreese.com.au)

[www.haymanreese.com.au](http://www.haymanreese.com.au)



**HAYMAN REESE**  
**PART No: 100319-WL**  
**FORD EL FALCON**  
**FORD FG FALCON/G6/G6E/G6E TURBO**  
**INSTALLATION INSTRUCTIONS**

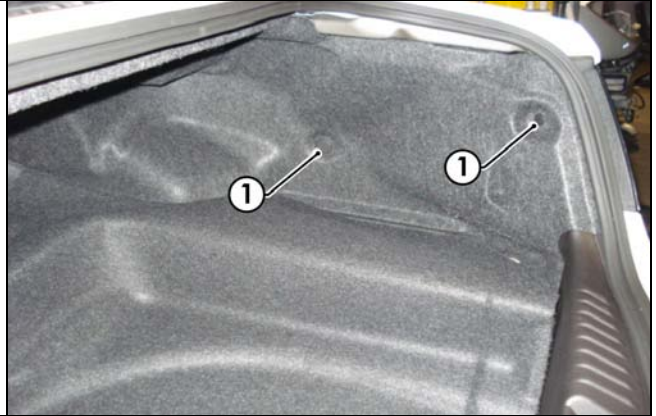
PLEASE ENSURE THAT INSTRUCTIONS ARE UNDERSTOOD PRIOR TO FITMENT

The following steps are for the Ford FG Falcon/G6/G6E/G6E Turbo models only. For the Ford EL Falcon models, please refer to page 2.

1. In the luggage compartment, remove the floor carpet cover (1).



2. Release the panel clip (1) from the RHS luggage compartment trim.



3. Peel open the RHS luggage compartment trim (1) to gain access to the RHS tail light connector.



Issue Date 02-12-11

Page 6

Part No: 100319-WL

Hayman Reese (Cequent)  
PO Box 4050, Dandenong South VIC 3164  
Phone 1800 812 017 Email [info@haymanreese.com.au](mailto:info@haymanreese.com.au)

[www.haymanreese.com.au](http://www.haymanreese.com.au)



**HAYMAN REESE**  
**PART No: 100319-WL**  
**FORD EL FALCON**  
**FORD FG FALCON/G6/G6E/G6E TURBO**  
**INSTALLATION INSTRUCTIONS**

PLEASE ENSURE THAT INSTRUCTIONS ARE UNDERSTOOD PRIOR TO FITMENT

4. Locate and disconnect the RHS tail light connector (1).

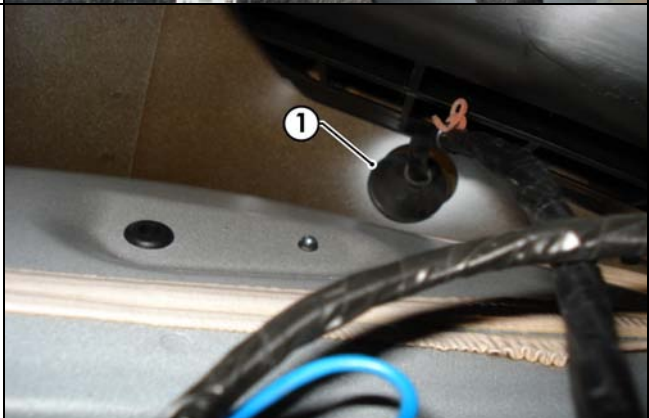


5. Connect the trailer patch harness (P/No 100319-WL) connectors (1) between the tail light connectors (2).



6. Locate the vehicle blanking grommet (1) and remove it.

**Note: If the vehicle is fitted with an RPA kit, drill a Ø30mm access hole near the existing grommet for tail harness routing.**



Issue Date 02-12-11

Page 7

Part No: 100319-WL


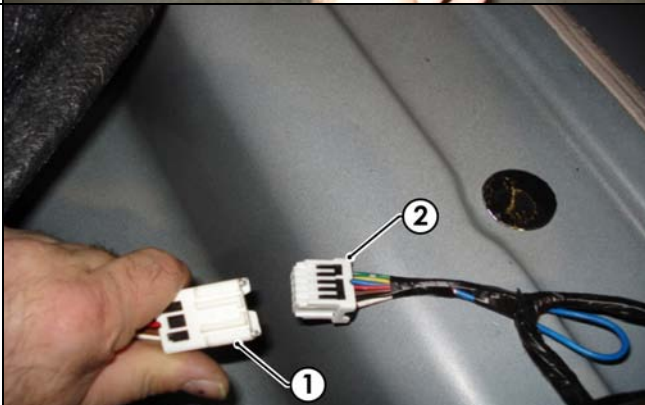
Hayman Reese (Cequent)  
PO Box 4050, Dandenong South VIC 3164  
Phone 1800 812 017 Email [info@haymanreese.com.au](mailto:info@haymanreese.com.au)

[www.haymanreese.com.au](http://www.haymanreese.com.au)



**HAYMAN REESE**  
**PART No: 100319-WL**  
**FORD EL FALCON**  
**FORD FG FALCON/G6/G6E/G6E TURBO**  
**INSTALLATION INSTRUCTIONS**

PLEASE ENSURE THAT INSTRUCTIONS ARE UNDERSTOOD PRIOR TO FITMENT

<p>7. Mount the trailer socket (1) to the towbar mounting bracket using M4 fasteners (not supplied). <b>Note: The grommet must be moved along the harness to the desired location.</b></p> <p>8. Route the tail harness (2) (tail length 1200mm) along the towbar and up through the previously drilled out hole.</p> <p>9. Ensure the tail harness grommet is seated correctly and makes a good seal.</p> <p>10. Secure the grommet in place using a cable tie (not supplied).</p>	
<p>11. Connect the tail harness 8-way connector (1) to the trailer patch 8-way mating connector (2).</p>	
<p>12. Test the trailer harness function using a light board or multimeter.</p> <p>13. Secure all harnesses using cable ties (not supplied).</p> <p>14. Re-fit all removed parts and secure all fasteners, ensuring there are no squeaks or rattles.</p> <p>15. Place the instructions in the glove box after fitment.</p>	

Issue Date 02-12-11

Page 8

Part No: 100319-WL

Hayman Reese (Cequent)  
PO Box 4050, Dandenong South VIC 3164  
Phone 1800 812 017 Email [info@haymanreese.com.au](mailto:info@haymanreese.com.au)

[www.haymanreese.com.au](http://www.haymanreese.com.au)

