

**HAYMAN REESE**  
**PART No: 02960RW**  
**VW AMAROK WITHOUT STEP 06/2012 ON**

## INSTALLATION INSTRUCTIONS

PLEASE ENSURE THAT ALL INSTRUCTIONS ARE UNDERSTOOD PRIOR TO FITMENT



Installation Time: Approx **25** Mins

**Towbar Installation Instructions**      **Towbar capacity**  
**VW AMAROK WITHOUT STEP 06/2012 ON**

**Part Number 02960RW**

**Max Towing Braked 3000kg**  
**Max Static Ball Load 300kg**

Hayman Reese (Cequent)  
PO Box 4050, Dandenong South VIC 3164  
Phone 1800 812 017 Email [info@haymanreese.com.au](mailto:info@haymanreese.com.au)

**HAYMAN REESE**  
**PART No: 02960RW**  
**VW AMAROK WITHOUT STEP 06/2012 ON**

**INSTALLATION INSTRUCTIONS**

PLEASE ENSURE THAT ALL INSTRUCTIONS ARE UNDERSTOOD PRIOR TO FITMENT

**Warning:**

Do not, drill, cut, weld or otherwise modify the towbar.

If you are using electric welding on a motor vehicle, **always** check that the vehicle is not equipped with electronic engine or instrument management equipment. Failure to do so could **destroy** any onboard computers. If in doubt, check with the vehicle's manufacturer.

**General:**

1. Ensure all hardware items have been included refer to assembly diagram.
2. It is recommended that the instructions are read through and completely understood before making any attempt to fit this product.
3. Be wary of any changes to vehicle designs or other accessories that may conflict with the installation of this product.
4. Before drilling ensure that the area is clear of fuel, electrical & other components.
5. All holes drilled into the body panels shall have all burrs & swarf removed then coated with a suitable rust preventative paint.
6. The high tensile fasteners supplied with this product were used to achieve the specified rating. If replacement is required ensure that fasteners of the same rating & quality are used. Contact an authorised **Hayman Reese** dealer if further information is required.
7. Ensure that all hardware is fastened to torque list below check fasteners on regular basis.
8. Towbar load rating sticker provided with this product shall be conspicuously located on inside rear end of the driver's door. **(See diagram below).**
9. Hayman Reese recommends that you check your tow ball to ensure that it complies with the Australian standards **AS 4177.2**.
10. **PLEASE NOTE:** It is advised to remove your lug or tbm when not actually towing so as to produce a clear view of the vehicles registration plate if obscured, and to also provide maximum available departure angle.
11. Pull Pin must be fit in down position.

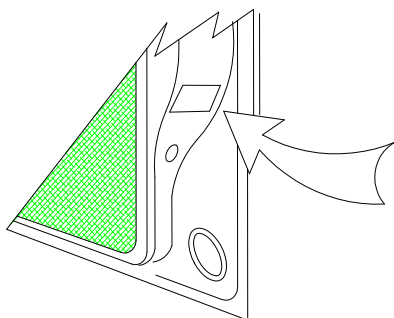
**Tow bar Maintenance and Care.**

Hayman Reese recommends that bolt torque's, as listed below, are routinely and regularly inspected and checked for correct tension. Replace any worn or defective parts.

We recommended to remove Tow Ball Mounts (TBM's, tongues or lugs) when not being used for any considerable length of time.

So as to avoid injury, when not towing it is suggested that the tongue, Pull Pin and R-clip are removed then stored in a safe, clean and dry place, away from excessive moisture.

Hitch Pull Pins and spring "R" clips are regularly checked for proper installation. Replace any worn or defective parts.



**Place load rating sticker  
inside driver's door here**

**RECOMMENDED ASSEMBLY TORQUE  
LISTING**

**Diameter Grade 8.8 Bolt**

|     |          |
|-----|----------|
| M6  | 9.5 Nm   |
| M8  | 21.7 Nm  |
| M10 | 43.4 Nm  |
| M12 | 77.3 Nm  |
| M14 | 146 Nm   |
| M16 | 189.8 Nm |

**FOR TOWING PURPOSES ONLY**

For towing capacity details please refer to vehicle owner's manual  
or to the manufacturer. Overloading can void your warranties.

Rev: **A**

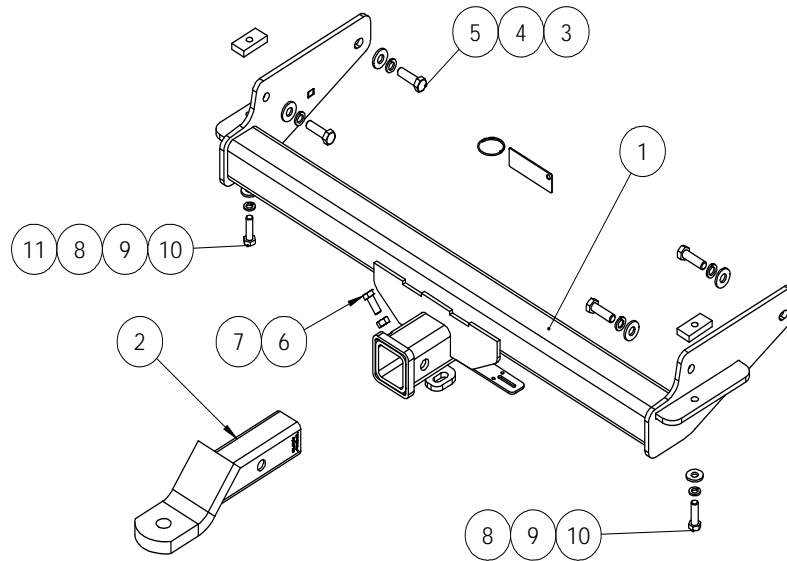
Page 2

Issue Date: **27/09/2012**

**HAYMAN REESE**  
**PART No: 02960RW**  
**VW AMAROK WITHOUT STEP 06/2012 ON**

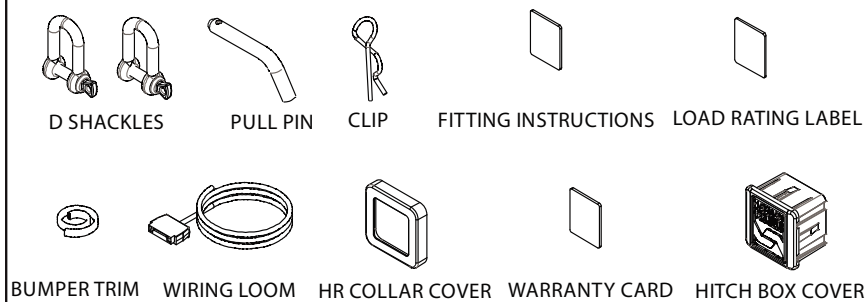
**INSTALLATION INSTRUCTIONS**

PLEASE ENSURE THAT ALL INSTRUCTIONS ARE UNDERSTOOD PRIOR TO FITMENT



| PART NO.   | QTY. | DESCRIPTION                          | ITEM NO. |
|------------|------|--------------------------------------|----------|
| A100551-A1 | 1    | VW AMAROK (NON-STEP)                 | 1        |
| 21161      | 1    | T.B.MOUNT 21161                      | 2        |
| PB526      | 4    | WASHER M12x28.8x3mm                  | 3        |
| PA228      | 4    | Wshr spring ft sec M12x4.0x2.5mm z/p | 4        |
| PA144      | 4    | BOLT M12-1.5x40 GR8.8                | 5        |
| PA130      | 1    | BOLT M10-1.50 x 25                   | 6        |
| PA182      | 1    | NUT HX M10 - 1.5 Z/P                 | 7        |
| PA221      | 2    | WSHR FT M10 X 25.4 X 3               | 8        |
| PA224      | 2    | M10 X 3.5 X 2.2 SPRING WSHR          | 9        |
| PA133      | 2    | M10 - 1.5 x 35mm BOLT                | 10       |
| A00834-11  | 2    | TAP PLATE 25x10x50                   | 11       |

**ADDITIONAL ITEMS**



Rev: **A**

Page 3

Issue Date: **27/09/2012**

**INSTALLATION INSTRUCTIONS**

PLEASE ENSURE THAT ALL INSTRUCTIONS ARE UNDERSTOOD PRIOR TO FITMENT

## Fitment of Towbar:

1. Fit towbar in-between chassis, ( aligning holes in both side plate & chassis )
2. Insert two M12 x 40-1.5p bolts, with spring washer and flat washer through side arm into chassis captive nuts, loosely tighten. ( Passenger and Driver side )
3. Insert one M10 x 35-1.5p bolt, with spring washer and flat washer through mount plate into chassis, secure with tapped plate, loosely tighten. ( Passenger and Driver side )
4. Torque all fasteners to specifications listed.

**HAYMAN REESE**  
**PART No: 100540-WL**  
**VOLKSWAGEN AMAROK**  
**INSTALLATION INSTRUCTIONS**

PLEASE ENSURE THAT INSTRUCTIONS ARE UNDERSTOOD PRIOR TO FITMENT

**Wiring Loom Installation Instructions**

**VOLKSWAGEN AMAROK**  
**Part No: 100540-WL**

**ECU Required: 04835**  
**Tail Harness Length Required: 400mm**

**Wiring Loom Installation Time: Approx 20 Mins**

Issue Date 26-04-13

Page 1

Part No: 100540-WL

Hayman Reese (Cequent)  
PO Box 4050, Dandenong South VIC 3164  
Phone 1800 812 017 Email [info@haymanreese.com.au](mailto:info@haymanreese.com.au)

[www.haymanreese.com.au](http://www.haymanreese.com.au)





**HAYMAN REESE**  
**PART No: 100540-WL**  
**VOLKSWAGEN AMAROK**  
**INSTALLATION INSTRUCTIONS**

**PLEASE ENSURE THAT INSTRUCTIONS ARE UNDERSTOOD PRIOR TO FITMENT**

1. In the engine bay, locate the vehicle battery (1).
2. Route the power harness (04825) (2) from the battery (1) and down into the vehicle undercarriage.

**Note: Do not connect the power harness to the battery at this point.**



3. From underneath the vehicle, following the path of the brake and fuel lines, route the power harness (1) from the engine bay down through to the chassis.

**Note: When routing any harnesses underneath the vehicle, ensure to avoid all moving parts, sources of heat and sharp objects.**



4. Route the power harness (1) along the LHS chassis rail, following the path of the blue vehicle breather pipe (2), towards the rear of the vehicle.



Issue Date 26-04-13

Page 2

Part No: 100540-WL

Hayman Reese (Cequent)  
PO Box 4050, Dandenong South VIC 3164  
Phone 1800 812 017 Email [info@haymanreese.com.au](mailto:info@haymanreese.com.au)

[www.haymanreese.com.au](http://www.haymanreese.com.au)



**HAYMAN REESE**  
**PART No: 100540-WL**  
**VOLKSWAGEN AMAROK**  
**INSTALLATION INSTRUCTIONS**

**PLEASE ENSURE THAT INSTRUCTIONS ARE UNDERSTOOD PRIOR TO FITMENT**

5. Continue to route the power harness (1) along the LHS chassis rail, following the path of the blue vehicle breather pipe (2) towards the rear of the vehicle.

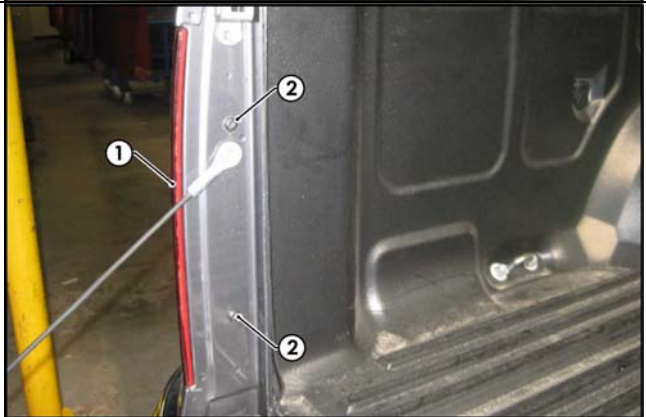


6. From the outside of the vehicle, open the tailgate (1).



7. Remove the LHS tail light (1) by first removing the two T30 torx bolts (2).

**Repeat for the RHS.**



**Issue Date 26-04-13**

**Page 3**

**Part No: 100540-WL**

Hayman Reese (Cequent)  
PO Box 4050, Dandenong South VIC 3164  
Phone 1800 812 017 Email [info@haymanreese.com.au](mailto:info@haymanreese.com.au)

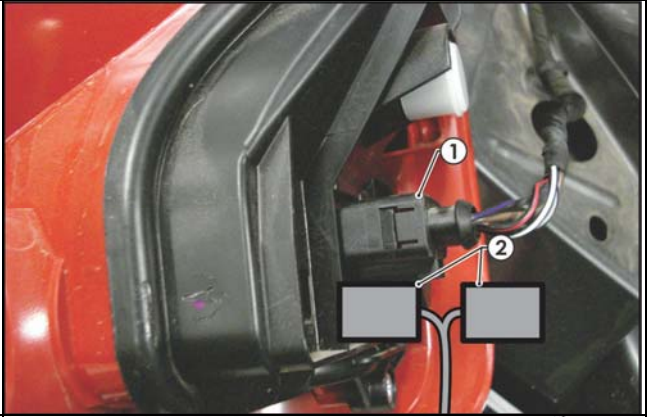
[www.haymanreese.com.au](http://www.haymanreese.com.au)



**HAYMAN REESE**  
**PART No: 100540-WL**  
**VOLKSWAGEN AMAROK**  
**INSTALLATION INSTRUCTIONS**

**PLEASE ENSURE THAT INSTRUCTIONS ARE UNDERSTOOD PRIOR TO FITMENT**

8. On the LHS of the tail gate, disconnect the tail light assembly connectors (1) and connect the trailer patch connector (2) in between.



9. Route the trailer patch (1) down through the LHS tail light cavity.
10. Following the path of the vehicle harness (2), route the trailer patch (1) along the rear and towards the RHS of the vehicle.



11. Connect 24-way waterproof ECU (04835) connector (1) to the ECU (2).



Issue Date 26-04-13

Page 4

Part No: 100540-WL

Hayman Reese (Cequent)  
PO Box 4050, Dandenong South VIC 3164  
Phone 1800 812 017 Email [info@haymanreese.com.au](mailto:info@haymanreese.com.au)

[www.haymanreese.com.au](http://www.haymanreese.com.au)



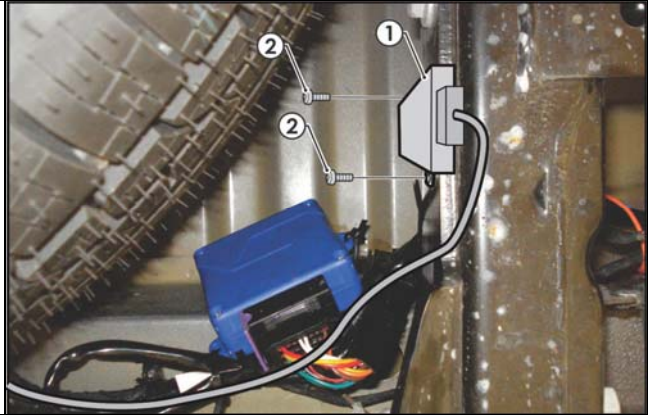


**HAYMAN REESE**  
**PART No: 100540-WL**  
**VOLKSWAGEN AMAROK**  
**INSTALLATION INSTRUCTIONS**

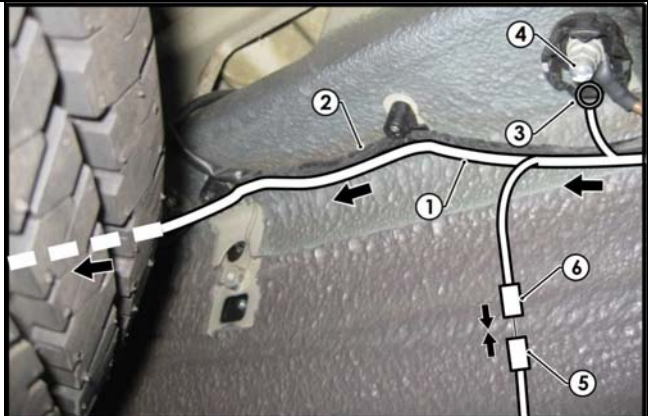
**PLEASE ENSURE THAT INSTRUCTIONS ARE UNDERSTOOD PRIOR TO FITMENT**

12. Secure the ECU (1) on the RHS of the spare wheel, onto the sheet metal using tek screws (2).

**Note: Ensure the ECU connector is facing downwards.**



13. Continue routing the trailer patch (1) towards the RHS of the vehicle, following the existing vehicle harness (2).
14. Connect the trailer patch ground ring terminal (3) to the vehicle grounding point (4).
15. Connect the power harness 1-way connector (5) to the trailer patch mating 1-way connector (6).



16. Following the path of the existing vehicle harness (1), route the trailer patch (2) up into the RHS tail light cavity.



Issue Date 26-04-13

Page 5

Part No: 100540-WL

Hayman Reese (Cequent)  
PO Box 4050, Dandenong South VIC 3164  
Phone 1800 812 017 Email [info@haymanreese.com.au](mailto:info@haymanreese.com.au)

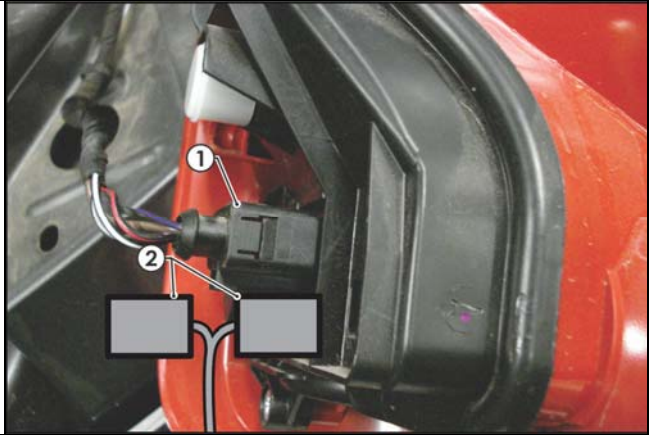
[www.haymanreese.com.au](http://www.haymanreese.com.au)



**HAYMAN REESE**  
**PART No: 100540-WL**  
**VOLKSWAGEN AMAROK**  
**INSTALLATION INSTRUCTIONS**

**PLEASE ENSURE THAT INSTRUCTIONS ARE UNDERSTOOD PRIOR TO FITMENT**

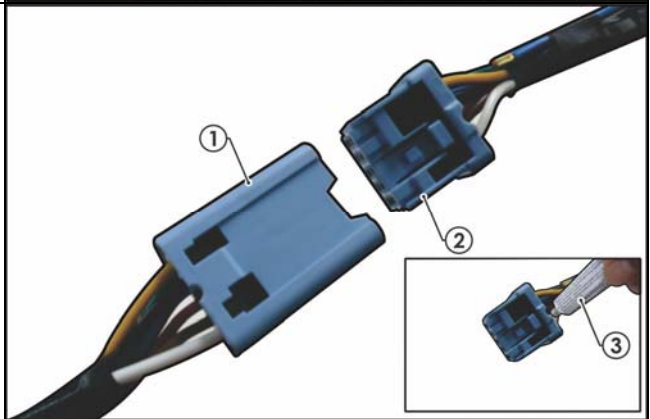
17. On the RHS of the tail gate, disconnect the tail light assembly connectors (1) and connect the trailer patch connectors (2) in between.



18. Mount the trailer socket (1) to the towbar mounting bracket using M4 fasteners (not supplied).  
19. Route the tail harness (Tail Length: 400mm) (2) along the towbar towards the LHS of the vehicle and the trailer patch.  
20. Bundle any excess tail harness (2) and secure it in place using a cable tie (not supplied).



21. Connect the tail harness 8-way connector (1) to the trailer patch mating 8-way connector (2).  
22. Waterproof the back of the 8-way connectors (1&2) using electrical grease or silicone (3).



Issue Date 26-04-13

Page 6

Part No: 100540-WL

Hayman Reese (Cequent)  
PO Box 4050, Dandenong South VIC 3164  
Phone 1800 812 017 Email [info@haymanreese.com.au](mailto:info@haymanreese.com.au)

[www.haymanreese.com.au](http://www.haymanreese.com.au)



**HAYMAN REESE**  
**PART No: 100540-WL**  
**VOLKSWAGEN AMAROK**

**INSTALLATION INSTRUCTIONS**

**PLEASE ENSURE THAT INSTRUCTIONS ARE UNDERSTOOD PRIOR TO FITMENT**

- |   |  |
|---|--|
| <ul style="list-style-type: none"><li>23. Connect the 12v ring terminal from the power harness to the +12v side of the vehicle battery.</li><li>24. Test the trailer harness function using a Light Board or multimeter.</li><li>25. Secure all harnesses using cables ties (not supplied).</li><li>26. Re-fit all removed parts and secure all fasteners, ensuring there are no squeaks or rattles.</li><li>27. Place the instructions in the glove box after fitment.</li></ul> |  |
|---|--|

Issue Date 26-04-13

Page 7

Part No: 100540-WL

Hayman Reese (Cequent)  
PO Box 4050, Dandenong South VIC 3164  
Phone 1800 812 017 Email [info@haymanreese.com.au](mailto:info@haymanreese.com.au)

[www.haymanreese.com.au](http://www.haymanreese.com.au)

