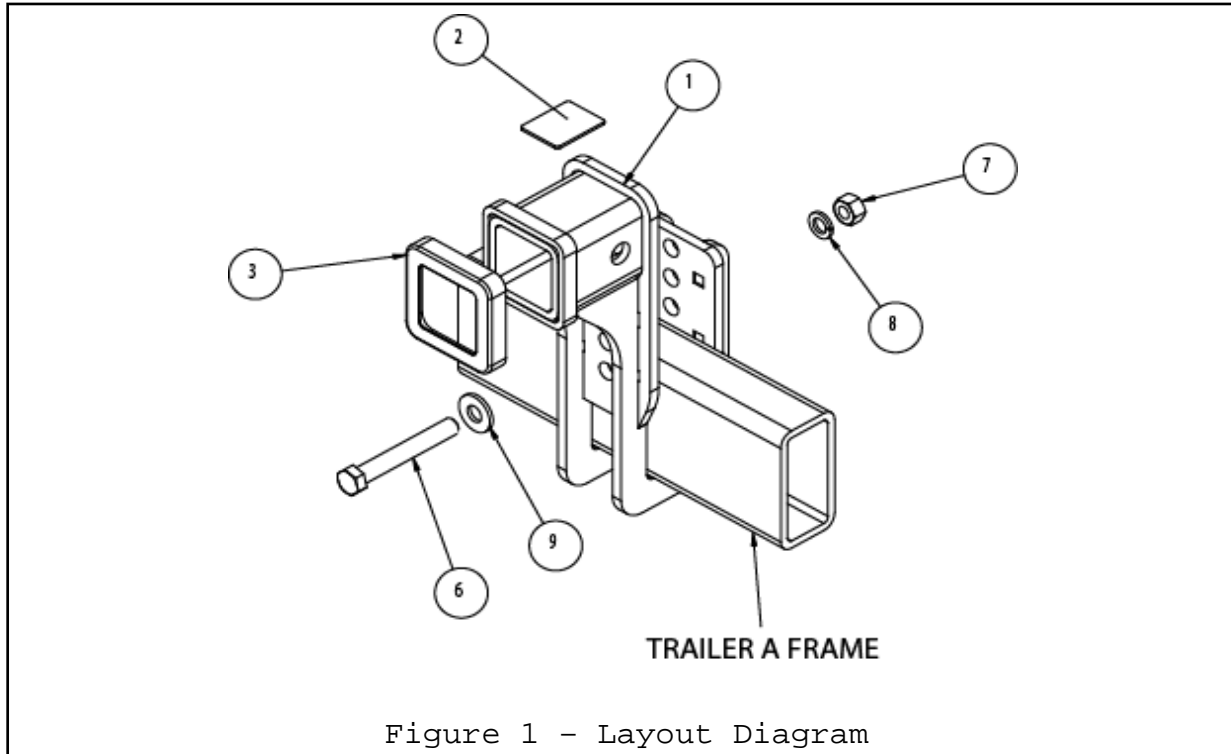


HAYMAN REESE
PART No: 08332
WEIGHT DISTRIBUTION HOLDER

INSTALLATION INSTRUCTIONS

PLEASE ENSURE THAT INSTRUCTIONS ARE UNDERSTOOD PRIOR TO FITMENT



Installation Time: Approx **5 Mins**

Installation Instructions

Part Number **08332**

WEIGHT DISTRIBUTION HOLDER

Warning:

Hayman Reese (Cequent)
PO Box 4050, Dandenong South VIC 3164
Phone 1800 812 017 Email info@haymanreese.com.au

1. Ensure all hardware items have been included, refer to assembly diagram.
2. It is recommended that the instructions are read through and completely understood before making any attempt to fit this product.
3. Contact an authorised **Hayman Reese** dealer if further information is required about this product.

HAYMAN REESE

PART No: 08332

WEIGHT DISTRIBUTION HOLDER

INSTALLATION INSTRUCTIONS

PLEASE ENSURE THAT INSTRUCTIONS ARE UNDERSTOOD PRIOR TO FITMENT

LIST OF PARTS:

ITEM NO	DESCRIPTION	QTY
1	HOLDER ASSEMBLY	1
	FITTING INSTRUCTIONS	1
6	M12x90 BOLT	1
7	M12 NUT	1
8	M12 SPRING WASHER	1
9	M12 FLAT WASHER	1

STEPS TO FIT:

1. Fit the holder from underneath the trailer A Frame as shown in Figure 1.
2. Fit the M12 bolt, flat washer, spring washer and nut in the hole that suits the trailer A Frame size, and lock the Head & Shank assembly with a lockable pull pin, as shown in Figure 2.



Figure 2 - Weight Distribution Holder

Note: 150mm drop shank to mount in reverse direction to Figure 2.