



# LEGENDEX ROCK SLIDERS

PRODUCT CODE: P-RS-JNY-2

**Suzuki Jimny 2018+**

PRODUCT CODE: P-RS-JNY-2



## CHECK YOUR PACK LIST

Once you have unpacked the system from the box make sure you have all parts that are listed on the packing list below.

### COMPONENTS

RS-JNY-1phs	SLIDER PASSENGER SIDE x 1
RS-JNY-1phs	SLIDER DRIVERS SIDE x 1
13 TPI BOLTS	BOLTS x 6
TREAD	TREAD PLATE x 2
WASHER	WASHERS x 6

### TOOLS REQUIRED

- 19mm Spanners | Ratchet Spanner Ideal
- Bottle Jack | Trolley Jack Ideal
- Timber Block | Rubber Ideal
- Rubber Mallet
- 13mm Drill Bit + Drill
- Floor Mat
- Portable Light
- Flat Head Screwdriver | Large

## IMPORTANT BEFORE INSTALLATION

- Before installing your sliders park your vehicle on level ground ensuring it is in gear (or Park) and the handbrake is applied. Never use a jack to support the weight of the vehicle while working on it.
- Wear protective clothing including eye wear listed on the packing list below.

## REMOVING ORIGINAL SIDE STEPS

- **BEFORE YOU START – DOUBLE CHECK** – that you have the correct sliders for the job.
- Check the invoice and the packaging.
- Remove packaging: Check you have all the correct parts and no damage from freight.
- You might need to wash the underbody before starting the job.
- Generously spray the bolts with WD40 (or other spray lube) and leave to penetrate.
- Each 4wd is different so you'll need to identify the correct spanner size
- Once remover – **KEEP** just in case.

## INSTALLING YOUR NEW ROCK SLIDERS

---

### STEP 1

Remove the bolts attached to the mounting points and put these side, align the slider with the body and chassis using a jack

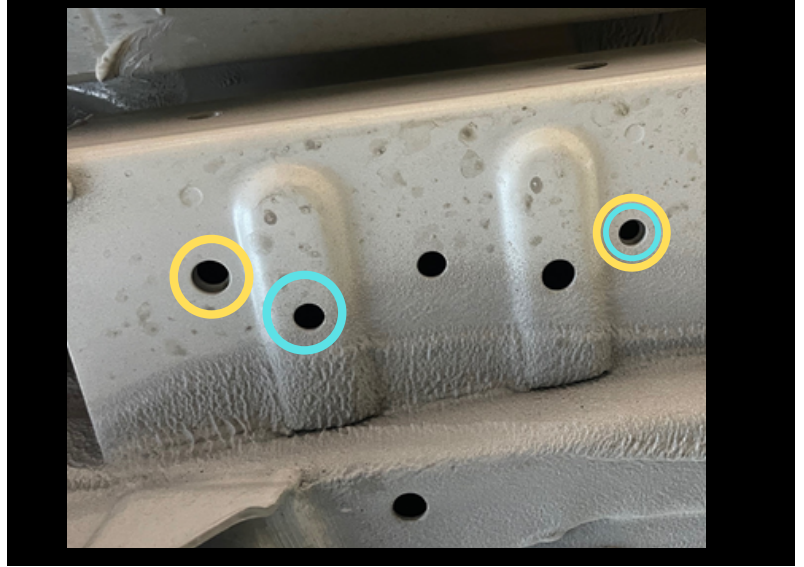


# INSTALLING YOUR NEW ROCK SLIDERS

PRODUCT CODE: P-RS-JNY-2

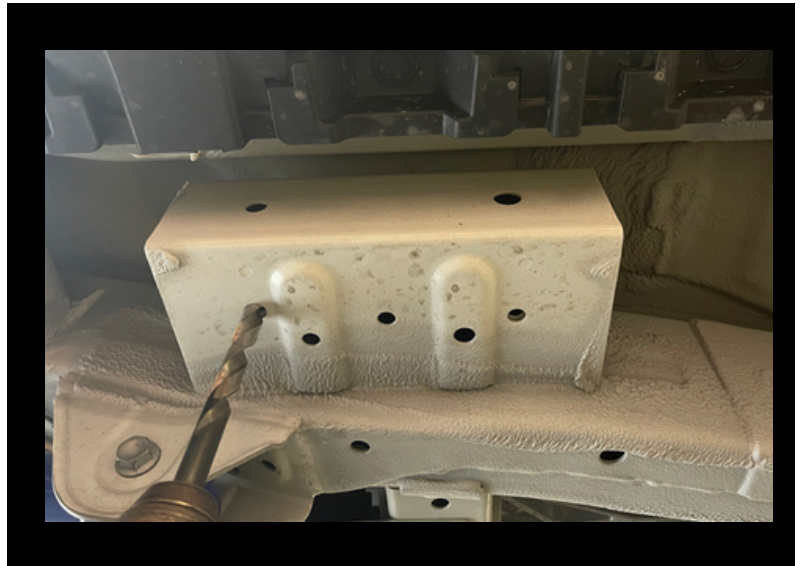
## STEP 2

On the slider mounting unit you will notice 3 holes drilled out - you will only require using 2 of these holes. Looking at the chassis. Some models will use the blue holes. Some model will use the yellow holes.



## STEP 3

When aligning your slider up look through to see which of the 2 mounting spots you will use. Then drill out those holes (this is required to get bolts through). Now that you have drilled the holes out, continue to bolt up the rectangular slider bracket to the chassis.



## STEP 4

Now align the triangular bracket to the chassis ring shown in image and bolt up.



# INSTALLING YOUR NEW ROCK SLIDERS

---

## FINAL NOTES ONCE SLIDERS ARE FITTED

NOW THAT THE SLIDERS ARE FITTED TO YOUR VEHICLE:

- Double check all nuts and bolts are tight.
- Start the vehicle and listen for any vibration / rattle noises.
- Check the tread plate bolts are tight as well.
- Also re-check tightness of the bolts after 20-50km

## WASHING AND RE-CHECKING

- DO wash after use – using a hose – NOT high-pressure cleaner
- IF you have damaged your coating in use- a high-pressure cleaner can/ will get underneath and lift the coating.
- If you notice any damage to the coating – respray with paint or underbody spray
- After every 4wd trip—re-tighten the bolts.
- After every 4wd trip—check the alignment of the slider.

## NOTES

---

---

---

---

---

---

---



## THANKS FOR CHOOSING A LEGENDEX PRODUCT

If you're on Facebook or Instagram we would love to show off your vehicle on our page. Simply tag us in a post with photos of your Legendex product using the tags below and we will feature your vehicle. @legendex on Facebook and Instagram