

Fitting Instructions



SKU

TXR832

PRODUCT

TAG Extreme Recovery Towbar for Isuzu MU-X (08/2021 - On)

SPECIFICATIONS

- Towbar Class: Extreme Recovery
- Towing Capacity: 3500kg
- Tow ball Weight: 350kg
- Recovery Point WLL: 4000kg
- Approx. Fitment Time: 90 Minutes



Scan for latest
version of these
instructions

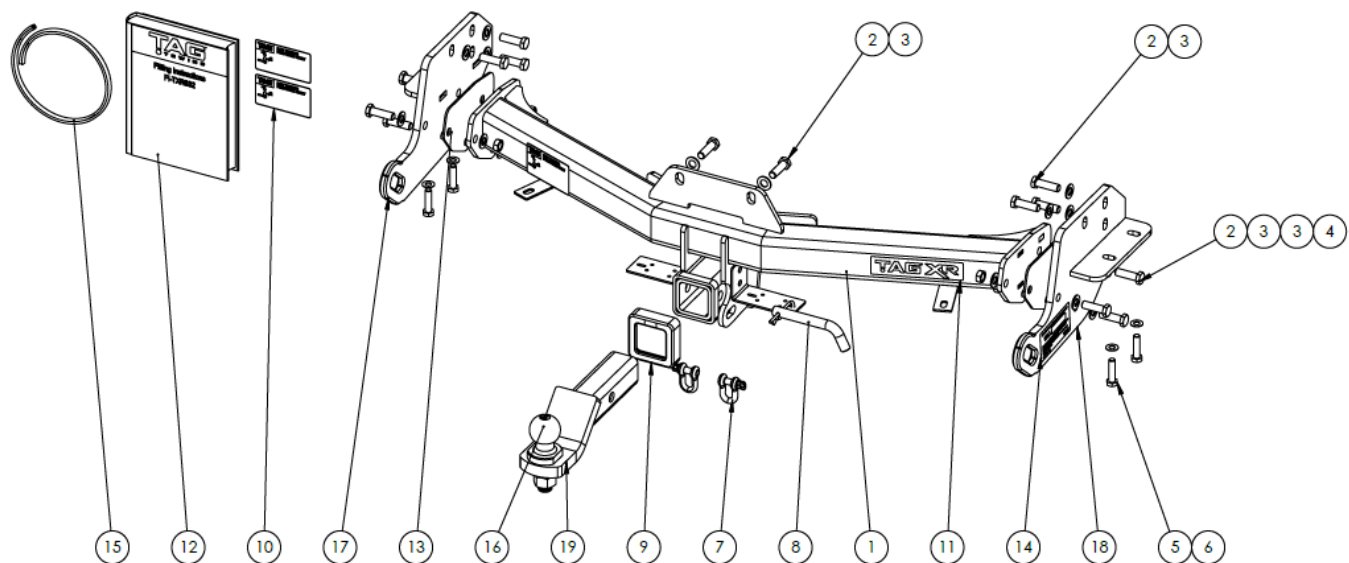
TOOLS REQUIRED

- Spanners
- Sockets
- Air Saw or similar.
- Trim Removal Tool
- Torque Wrench

IN THIS GUIDE

- Fitment Instructions
- Torque Settings
- Warranty Info

Towbar Assembly



ITEM NO.	DESCRIPTION	QTY.	ITEM NO.	DESCRIPTION	QTY.
1	Welded Assembly for TXR832	1	11	TAG XR Sticker 150 x 33mm	1
2	M12 x 1.25 x 40 Hex Bolt	14	12	Fitting Instruction	1
3	M12 Flat Washer Zinc Clear	20	13	TXR832 3mm Spacer Plate	2
4	M12 x 1.25 Nut	6	14	Tag WLL Sticker	1
5	M10 x 1.25 x 40 Set Screw	4	15	Rubber Pinch Weld – 900mm	1
6	M10 Flat Washer	4	16	50mm TAG Tow Ball	1
7	D-Shackle – 10mm – 1000kg	2	17	End Plate Assembly	1
8	Class 4 Pin & Clip	1	18	End Plate Assembly DS	1
9	TAG Hitch Cover	1	19	L4045S DURATEC PC TBM	1
10	TAG Compliance Sticker	3			

Important Information



**ENSURE THAT THE FITTING INSTRUCTIONS ARE READ AND UNDERSTOOD PRIOR TO FITMENT
PLACE THESE INSTRUCTIONS IN THE VEHICLE'S GLOVEBOX AFTER INSTALLATION IS COMPLETED**

Warning:

- This product is for towing purposes only and must only be loaded as shown in your vehicle Owner's Manual.
- This towbar is NOT to be drilled, cut, welded, or modified in any way.
- All load ratings shown are under the assumption your trailer has a functional braking system.
- When installed in positions other than the one shown in these instructions the Tow Ball/ Tow Ball Mount may interfere or obstruct certain features of your vehicle (tailgate opening, Chassis clearance, Sensor Operation, etc.)

General:

- Before fitting this towbar check installation hardware is included and correct.
- Check that the towbar is suitable for the vehicle make, model and year then make sure any changes to the vehicle design do not conflict with the fitting of this towbar. (Tray, Canopy, Suspension etc.)
- Check behind chassis rail and body panels before drilling to ensure no hazards are present (fuel lines, electrical wires etc.)
- After drilling, blow any filings clear, remove any swarf in and around the area and treat exposed metal with a suitable rust inhibitor.
- If this vehicle requires a bumper cut out, please check to make sure that your measurements are correct and clear before cutting any panels as some bumper profiles can change. If you are not sure, then please ask your towbar supplier
- To ensure the towbar is safe and secure it is the owners' responsibility that each fastener is torqued **every 1000km**. For any reason that the fasteners are not suitable for re-torquing it is the owners' responsibility to replace all fasteners on the towbar ensuring each fastener is of the same grade (8.8) and class as the originals. Failure to do so will diminish the towing capacity of the towbar and may result in the deterioration of the chassis of the vehicle. Contact an authorised TAG distributor or the TAG fitment centre if further information is required.

Towbar Maintenance and Care:

It is recommended, when not in use, the Tow Ball Mount assembly and class 4 Pin and Clip is stored inside the car away from moisture to prevent standing water from forming rust. Inspect to ensure, on regular basis, fasteners are torqued to the specifications below and in good condition.

Metric Bolt Torque Settings

Diameter	Pitch	Grade	Torque	Unit		Diameter	Pitch	Grade	Torque	Unit
M8	1.25	8.8	29	Nm		M12	1.25	10.9	125	Nm
M10	1.25	8.8	57	Nm		M12	1.50	10.9	105	Nm
M10	1.50	8.8	44	Nm		M14	1.25	10.9	195	Nm
M12	1.25	8.8	101	Nm		M14	1.50	10.9	165	Nm
M12	1.50	8.8	97	Nm		M16	1.25	10.9	295	Nm
M12	1.75	8.8	77	Nm		M16	1.50	10.9	250	Nm
M14	2.00	8.8	122	Nm		50mm Tow Ball	N/A	N/A	300	Nm
M16	2.00	8.8	190	Nm		70mm Tow Ball	N/A	N/A	750	Nm

Installation Instructions



Step 1: Remove Rear Bumper & Shipping Hook

- a. Lower the spare wheel.
- b. Remove 5x hex head screws fastening the mudflap to each wheel arch.
- c. Remove the plastic scrivet at the bottom of the bumper directly behind each wheel arch.
- d. Repeat on opposite side.
- e. Remove the plastic scrivets from the rear most underside of the bumper.
- f. Remove 1x hex head screw from either side of the tail gate below the taillight.
- g. Beginning at one wheel arch, carefully peel the bumper away from the body. Repeat on the other side.
- h. Disconnect the bumper harness located on top of the crossmember. Set bumper aside.
- i. Remove the shipping hook from the chassis. Discard bolts & hooks.
- j. Remove the bumper retaining brackets from the rear panel of the vehicle via 2x M6 nuts on each side. Discard brackets & nuts.



Step 2: Fit Towbar

- a. Fasten PS endplate assembly to inside of chassis using 3x M12x 1.25x 40 bolts with flat washers.
- b. Insert 2x M10x 1.25x 40 bolts into bottom of chassis. Leave all bolts loose.
- c. Repeat on DS
- d. Lift main bar assembly up to endplates & insert 3x M12x 1.25x 40 bolts with flat washers & nuts per side.
- e. Loosely fasten the top center of the main bar to the cross member with 2x M12 x1.25x 40 bolts.
- f. Beginning at the chassis, tighten all bolts to the torque specification on page 2.

Installation Instructions



Step 3: Cut Bumper

Note: The towbar installer is ultimately responsible for the location & quality of the bumper cut. To avoid mistakes, please use the following measurements as a guide only. We suggest making small incremental cuts and regularly test fit the bumper to ensure an accurate and tidy appearance. The additional application of rubber pinch-weld around the cut edge ensures a neat & tidy look.

- To separate the center fascia trim from the bumper, remove 4x small Phillips screws from inside the bumper. 2x either side of center & 1 each at the outer edge of the fascia trim. Retain screws.
- Release the tabs protruding through the contour groove whilst gently peeling the fascia trim away from the main skin. Set trim aside.
- Release the reverse sensor harness from the two outer square harness mounts inside the bumper.
- Hold a ruler or straight edge on each side of square harness mount and draw a line up to the bumper edge.
- Using an air hacksaw or similar cut bumper along marked lines and across the top of each harness block.

Note: This cut can be adjusted as it is unseen from the outside once the fascia trim is installed.

- Refit the bumper in reverse of steps 1a-f and check clearances.
 - Use the template provided on the last page of these fitting instructions for the fascia cut-outs.
- Note:** Please use this as a guide and visually check the marked cut-out against the bumper base and the recovery eyes before attempting the cut. See additional instructions on the sheet.
- Apply the supplied pinch-weld to the fascia trim and cut off any excess at the bottom edge of the bumper.
 - Re-install fascia trim onto main bumper
 - Using a 5mm drill bit carefully drill a hole in the center of 2x tabs adjacent to the cut trim area.
 - Cable-tie the loose reverse sensor harness to the drilled tabs. Repeat on opposite side.



Installation Instructions



Step 4: Apply Compliance Label

- a. Attach TAG Hitch cover with rubber mallet carefully to prevent breaking.
- b. Attach the tow ball to the ball mount. The flat side of the tow ball **MUST BE** parallel to the outer edge of the ball mount. **Tighten the tow ball to 300Nm.**
- c. Insert the ball mount into the receiver and secure with the Pull pin and R-Clip. When not in use, secure the Ball Mount in a safe place inside your vehicle.
- d. Apply one of the compliance labels to the pillar of the driver's door. Place the remaining label and the fitting instructions in the vehicle handbook



TAG Warranty Statement



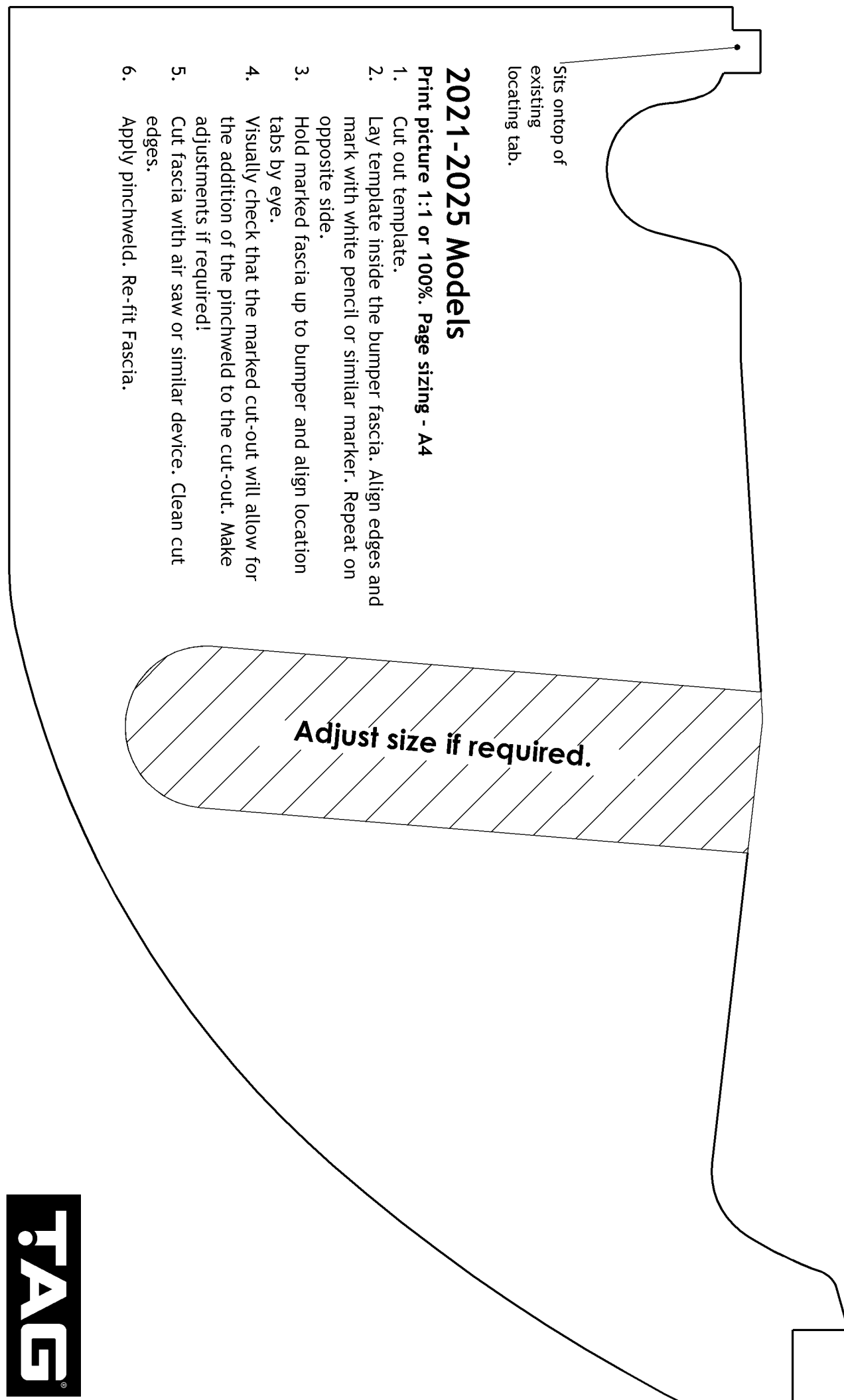
SWD warrants your TAG Towbar for its full product life under the following conditions:

- You can show proof of purchase.
- The towbar has been correctly installed by a suitably qualified installer.
- The towbar has not been modified or abused in any way and has only been used for the purpose intended.
- The towbar was not fitted second hand to your vehicle.

The extent of this warranty includes materials and workmanship used in the manufacture of the towbar and is to the equivalent value of current, full replacement cost.

Nothing stated or implied in this warranty limits in any way, the statutory rights that you may have.

To make a claim visit the original installer in the first instance or, if you are unable to or are not satisfied with their help, then contact us direct by phone on 1300 669122 or visit www.swd.com.au.



Sits on top of
existing
locating tab.

2021-2025 Models

Print picture 1:1 or 100%. Page sizing - A4

1. Cut out template.
2. Lay template inside the bumper fascia. Align edges and mark with white pencil or similar marker. Repeat on opposite side.
3. Hold marked fascia up to bumper and align location tabs by eye.
4. Visually check that the marked cut-out will allow for the addition of the pinchweld to the cut-out. Make adjustments if required!
5. Cut fascia with air saw or similar device. Clean cut edges.
6. Apply pinchweld. Re-fit Fascia.

Adjust size if required.

Sits on top of existing locating tab.

2025-on Facelift Models

Print picture 1:1 or 100%. Page sizing - A4

1. Cut out template.
2. Lay template inside the bumper fascia. Align edges and mark with white pencil or similar marker. Repeat on opposite side.
3. Hold marked fascia up to bumper and align location tabs by eye.
4. Visually check that the marked cut-out will allow for the addition of the pinchweld to the cut-out. Make adjustments if required!
5. Cut fascia with air saw or similar device. Clean cut edges.
6. Apply pinchweld. Re-fit Fascia.

Adjust if required