

# Fitting Instructions



SKU

**TXR870**

PRODUCT

## **TAG Extreme Recovery Towbar for LDV T60 Cab Chassis (07/2017-on)**

SPECIFICATIONS

- Towbar Class: CL 7 Extreme Recovery
- Towing Capacity: 3500kg
- Tow ball Weight: 350kg
- Recovery Point WLL: 4500kg
- Approx. Fitment Time: 90 Minutes



Scan for latest  
version of these  
instructions

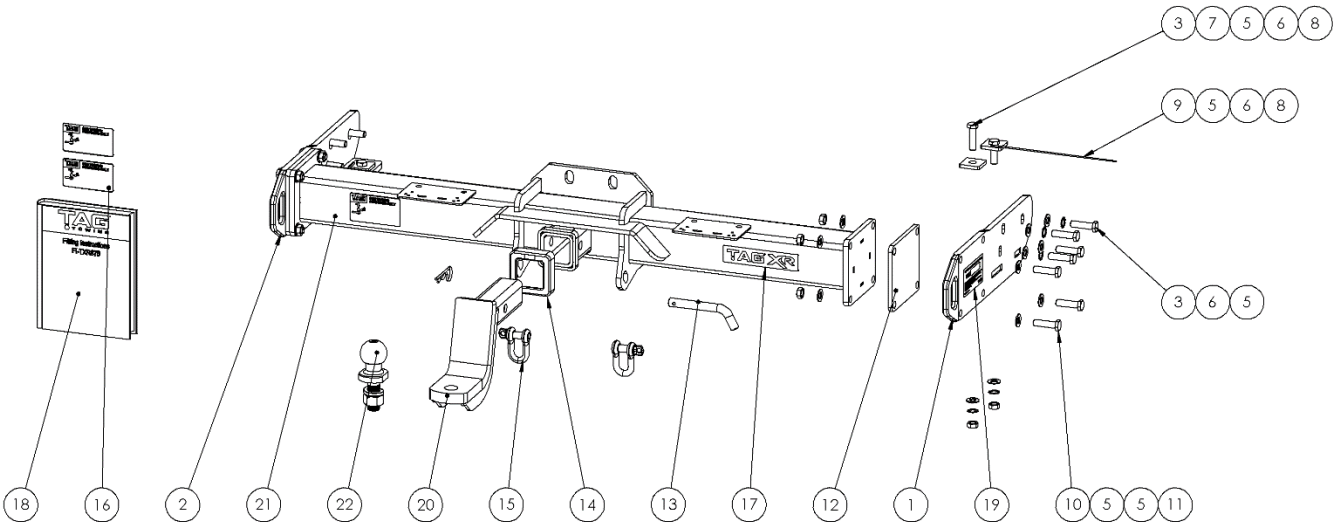
TOOLS REQUIRED

- Spanners
- Sockets
- Air Saw or similar.
- Trim Removal Tool
- Torque Wrench

IN THIS GUIDE

- Fitment Instructions
- Torque Settings
- Warranty Info

# Towbar Assembly



| Item No. | Description                                  | QTY. | Item No. | Description              | QTY. |
|----------|--|------|----------|--------------------------|------|
| 1        | Welded Assembly TXR870                       | 1    | 12       | End Cap Spacer           | 2    |
| 2        | End Plate PS TXR783                          | 1    | 13       | Class 4 Pin & Clip       | 1    |
| 3        | End Plate DS TXR783                          | 1    | 14       | TAG Hitch Cover          | 1    |
| 4        | M12 x 1.75 x 45 Set Screw                    | 8    | 15       | D-Shackle - 10mm. 1000kg | 2    |
| 5        | M12 Flat Washer                              | 26   | 16       | TAG Compliance Sticker   | 3    |
| 6        | M12 Shakeproof Washer                        | 10   | 17       | TAG XR Sticker           | 1    |
| 7        | Top Plate - 40x40x6                          | 2    | 18       | Fitting Instruction      | 1    |
| 8        | M12 x 1.75 Nut                               | 4    | 19       | Tag WLL Sticker          | 1    |
| 9        | Top Plate with M12x1.75x40 Bolt & 250mm Wire | 2    | 20       | L4171 Tow Ball Mount     | 1    |
| 10       | M12 x 1.25 x 45 Bolt                         | 8    | 21       | 50mm TAG Tow Ball - Zinc | 1    |
| 11       | M12 x 1.25 Nut                               | 8    |          |                          |      |

# Important Information



**ENSURE THAT THE FITTING INSTRUCTIONS ARE READ AND UNDERSTOOD PRIOR TO FITMENT  
PLACE THESE INSTRUCTIONS IN THE VEHICLE'S GLOVEBOX AFTER INSTALLATION IS COMPLETED**

## Warning:

- This product is for towing purposes only and must only be loaded as shown in your vehicle Owner's Manual.
- This towbar is NOT to be drilled, cut, welded, or modified in any way.
- All load ratings shown are under the assumption your trailer has a functional braking system.
- When installed in positions other than the one shown in these instructions the Tow Ball/ Tow Ball Mount may interfere or obstruct certain features of your vehicle (tailgate opening, Chassis clearance, Sensor Operation, etc.)

## General:

- Before fitting this towbar check installation hardware is included and correct.
- Check that the towbar is suitable for the vehicle make, model and year then make sure any changes to the vehicle design do not conflict with the fitting of this towbar. (Tray, Canopy, Suspension etc.)
- Check behind chassis rail and body panels before drilling to ensure no hazards are present (fuel lines, electrical wires etc.)
- After drilling, blow any filings clear, remove any swarf in and around the area and treat exposed metal with a suitable rust inhibitor.
- If this vehicle requires a bumper cut out, please check to make sure that your measurements are correct and clear before cutting any panels as some bumper profiles can change. If you are not sure, then please ask your towbar supplier
- To ensure the towbar is safe and secure it is the owners' responsibility that each fastener is torqued **every 1000km**. For any reason that the fasteners are not suitable for re-torquing it is the owners' responsibility to replace all fasteners on the towbar ensuring each fastener is of the same grade (8.8) and class as the originals. Failure to do so will diminish the towing capacity of the towbar and may result in the deterioration of the chassis of the vehicle. Contact an authorised TAG distributor or the TAG fitment centre if further information is required.

## Towbar Maintenance and Care:

It is recommended, when not in use, the Tow Ball Mount assembly and class 4 Pin and Clip is stored inside the car away from moisture to prevent standing water from forming rust. Inspect to ensure, on regular basis, fasteners are torqued to the specifications below and in good condition.

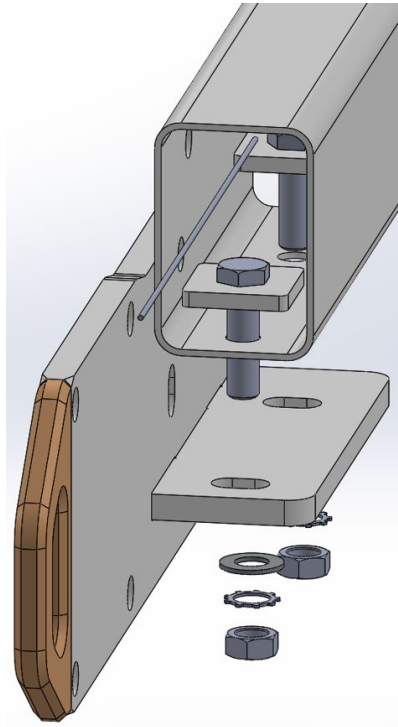
| Metric Bolt Torque Settings |       |       |        |      |  |               |       |       |        |      |
|-----------------------------|-------|-------|--------|------|--|---------------|-------|-------|--------|------|
| Diameter                    | Pitch | Grade | Torque | Unit |  | Diameter      | Pitch | Grade | Torque | Unit |
| M8                          | 1.25  | 8.8   | 29     | Nm   |  | M12           | 1.25  | 10.9  | 125    | Nm   |
| M10                         | 1.25  | 8.8   | 57     | Nm   |  | M12           | 1.50  | 10.9  | 105    | Nm   |
| M10                         | 1.50  | 8.8   | 44     | Nm   |  | M14           | 1.25  | 10.9  | 195    | Nm   |
| M12                         | 1.25  | 8.8   | 101    | Nm   |  | M14           | 1.50  | 10.9  | 165    | Nm   |
| M12                         | 1.50  | 8.8   | 97     | Nm   |  | M16           | 1.25  | 10.9  | 295    | Nm   |
| M12                         | 1.75  | 8.8   | 77     | Nm   |  | M16           | 1.50  | 10.9  | 250    | Nm   |
| M14                         | 2.00  | 8.8   | 122    | Nm   |  | 50mm Tow Ball | N/A   | N/A   | 300    | Nm   |
| M16                         | 2.00  | 8.8   | 190    | Nm   |  | 70mm Tow Ball | N/A   | N/A   | 750    | Nm   |

# Installation Instructions



## Step 1: Remove Rear Bumper & Install Towbar

- a. Lower the spare wheel.
- b. Insert M12 bolt & top plate on wire into chassis and align with forward most vertical hole.
- c. Insert another M12 x 1.75 x 40 bolt with square plate into rear-most vertical hole.
- d. Lift Chassis end plate up to bottom of chassis and align with previously inserted bolts. Loosely fasten with nuts, shake-proof & flat washers.



- e. Loosely fasten the end plate to the side of the chassis with 3 x M12 x 1.75 x 40 bolts with shake-proof & flat washers.
- f. Repeat steps b-d on opposite side.

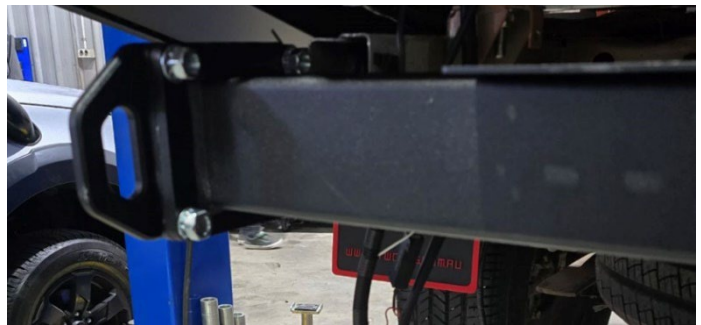


# Installation Instructions



**NOTE:** Check chassis width prior to fitting main bar assembly. The 2x 8mm end cap spacers will be required if chassis width is 1130mm. Discard the spacers for 1115mm chassis width.

- g. Lift towbar centre assembly up to end plates and align holes.
- h. Insert 4x M12 x 1.25 x 50 bolts with flat washers into each end and loosely fasten with nuts and flat washers.



- i. Raise the spare tyre.

# Installation Instructions

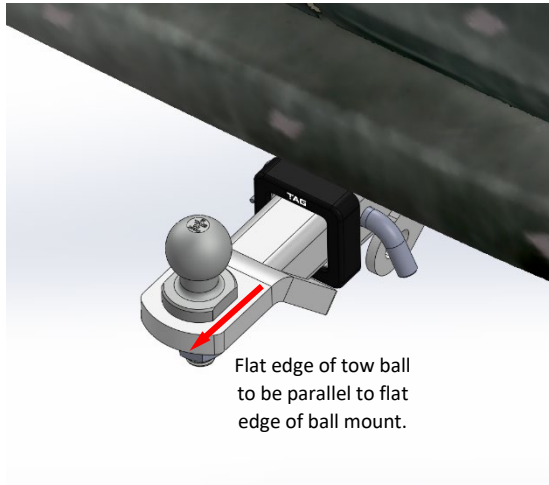


---

## Step 4: Complete Towbar & Apply Spare Compliance Label

---

- Attach TAG Hitch cover with rubber mallet carefully to prevent breaking.
- Attach the tow ball to the ball mount. The flat side of the tow ball **MUST BE** parallel to the outer edge of the ball mount. **Tighten the tow ball to 300Nm.**
- Insert the ball mount into the receiver and secure with the Pull pin and R-Clip. When not in use, secure the Ball Mount in a safe place inside your vehicle.
- Apply one of the compliance labels to the pillar of the driver's door. Place the remaining label and the fitting instructions in the vehicle handbook.



# TAG Warranty Statement



SWD warrants your TAG Towbar for its full product life under the following conditions:

- You can show proof of purchase.
- The towbar has been correctly installed by a suitably qualified installer.
- The towbar has not been modified or abused in any way and has only been used for the purpose intended.
- The towbar was not fitted second hand to your vehicle.

The extent of this warranty includes materials and workmanship used in the manufacture of the towbar and is to the equivalent value of current, full replacement cost.

Nothing stated or implied in this warranty limits in any way, the statutory rights that you may have.

To make a claim visit the original installer in the first instance or, if you are unable to or are not satisfied with their help, then contact us direct by phone on 1300 669122 or visit [www.swd.com.au](http://www.swd.com.au).